



ELEVATE ARCHITECTURAL PRODUCTS, INC. (EAPI) PROVIDES TESTING, CODE, AND DESIGN DATA SOLELY FOR INFORMATIONAL PURPOSES. EAPI DOES NOT ASSURE COMPLIANCE WITH SPECIFIC PROJECT DESIGN REQUIREMENTS, APPLICABLE CODES, AND TEST STANDARDS, WHICH MUST BE INDEPENDENTLY VERIFIED BY A QUALIFIED DESIGN PROFESSIONAL AND/OR CONSTRUCTION CONSULTANT. THE FIXING SYSTEM DESIGNS PROVIDED SHOULD NOT BE CONSTRUED AS ACCEPTANCE OR APPROVAL OF ANY DESIGN FOR ANY PURPOSE. THE INSTALLER AND/OR ARCHITECT ASSUME FULL RESPONSIBILITY FOR ALL ASPECTS OF DESIGN, ENGINEERING, FIRE SAFETY, AND TECHNICAL PERFORMANCE OF ANY DESIGNED SYSTEM.

THE SPECIFICATIONS OUTLINED BELOW PERTAIN TO US AND CANADA MULTISTORY TEST STANDARDS, SPECIFICALLY INCORPORATING ALFA COMPONENTS. ADDITIONAL SPECIFICATIONS FOR COMPLIANCE WITH FULL TEST STANDARDS RELATED TO THE BASE WALL CONSTRUCTION WILL ALSO BE NECESSARY. ADDITIONALLY, COMPLIANCE WITH FURTHER STANDARDS AND CODE REQUIREMENTS WILL LIKELY BE MANDATORY. IT IS ESSENTIAL TO CONFIRM THE APPLICABLE CODES AND DESIGN REQUIREMENTS FOR PROPER UTILIZATION.

ANY DEVIATION FROM THE DRAWINGS OR SPECIFICATIONS HEREIN MUST UNDERGO TESTING BY THE CUSTOMER AND/OR EVALUATION BY A CODE CONSULTANT AND/OR BUILDING OFFICIAL TO ENSURE COMPLIANCE WITH ALL APPLICABLE CODES. REGARDLESS OF WHETHER THIS INDEPENDENT EVALUATION OCCURS, EAPI BEARS NO RESPONSIBILITY FOR ANY MODIFICATION TO THE COMPONENTS, GEOMETRY, OR SPECIFICATIONS OUTLINED IN THE LISTING, OR FOR ANY USE OR INSTALLATION OF THE SYSTEM IN COMBINATION WITH ANY MATERIAL OR COMPONENT OTHER THAN AS EXPRESSLY STATED IN THE LISTING. BY RECEIVING THESE DRAWINGS, THE CUSTOMER ACKNOWLEDGES AND AGREES TO THIS NOTICE AND THE TERMS AND CONDITIONS HEREIN.

IN THESE DRAWINGS, "NBE" DENOTES THAT A PRODUCT IS NOT SOLD BY EAPI. THE USE AND INSTALLATION OF EACH "NBE" PRODUCT REFERENCED SHOULD BE REVIEWED AND APPROVED BY THE APPROPRIATE MANUFACTURER, ARCHITECT, ENGINEER, CONSULTANT, AND/OR CODE OFFICIAL TO ENSURE COMPLIANCE WITH ALL APPLICABLE CODES AND SUITABILITY FOR THE INTENDED APPLICATION. EAPI IS NOT OBLIGATED TO OBTAIN OR PROVIDE ANY SUCH REVIEW, APPROVAL, TEST, OR CERTIFICATION, NOR SHALL EAPI BE LIABLE FOR ANY INJURY, LOSS, OR DAMAGE ARISING FROM OR RELATED TO SUCH USE.

WHEN PREPARING THESE DRAWINGS, EAPI REVIEWS DETAILS RELATING TO MATERIALS MANUFACTURED AND/OR SUPPLIED SOLELY BY EAPI.

THE CHOICE OR PLACEMENT OF WEATHER BARRIER AND INSULATION MATERIALS IN CONJUNCTION WITH EAPI PRODUCTS MAY IMPACT AIR MOISTURE MIGRATION OR OTHER CALCULATIONS. HOWEVER, EAPI MAKES NO REPRESENTATIONS REGARDING THE SUITABILITY OF THE TYPE OR USE OF ANY WEATHER BARRIER OR INSULATION MATERIAL AND DISCLAIMS ANY LIABILITY OR DAMAGES RELATED THERETO.



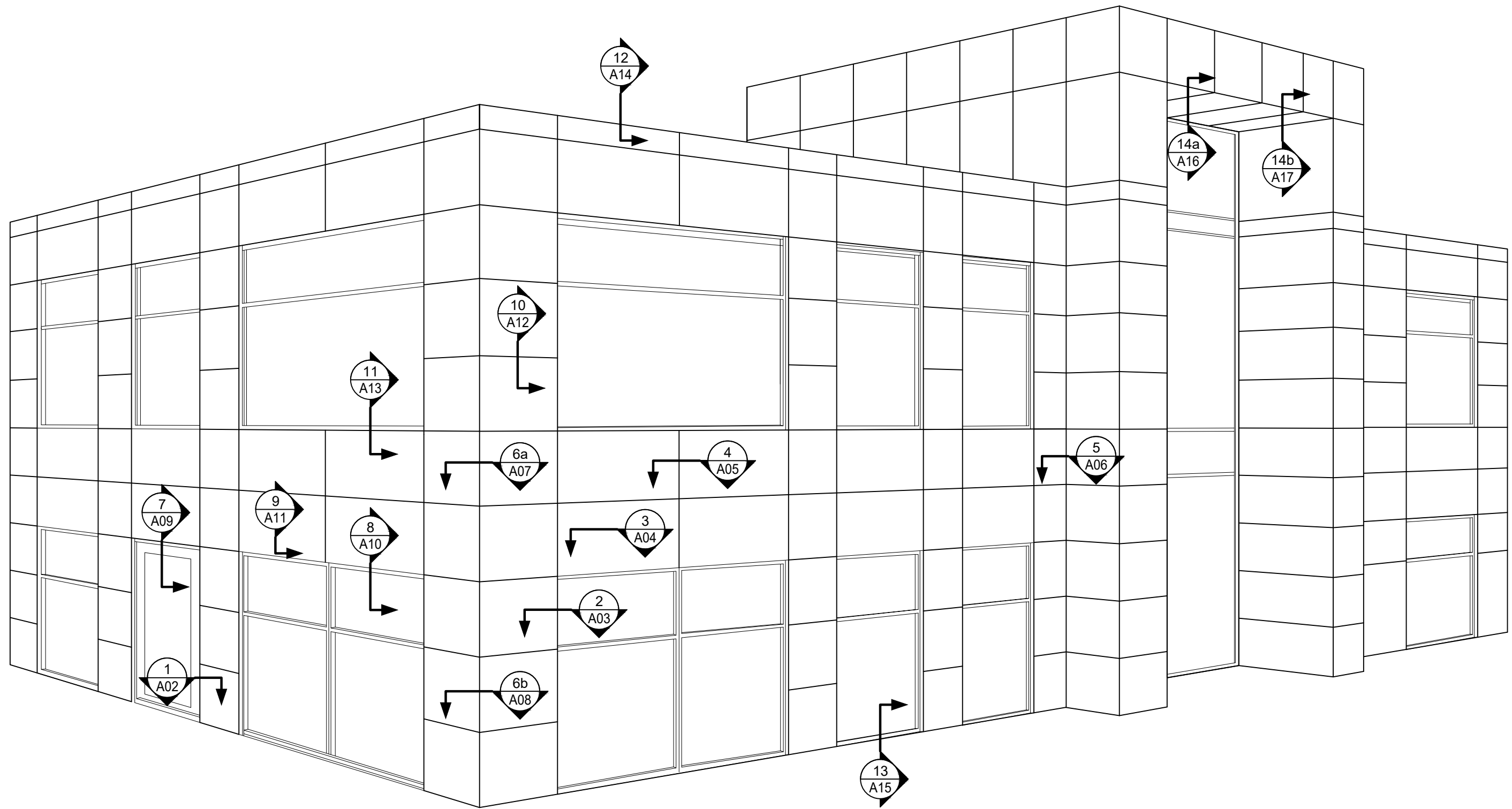
COVER PAGE

DRAWN BY HN
JOB # 000-000
DATE 03-14-2024

REV #	DATE	COMMENTS
▲		
▲		
▲		
▲		

This document is the sole property of ALFA Panels, and all design, manufacturing, reproduction, use and sale rights regarding the same are expressly forbidden. It is submitted under a confidential relationship, for a special purpose, and the recipient, by accepting this document assumes custody and agrees that this document will not be copied or reproduced in whole or in part, nor its contents revealed in any manner or to any person except for the purpose for which it was tendered, nor any special features peculiar to this design be incorporated in other projects.

SHEET NUMBER
A00



KEY ELEVATION DETAILS

DRAWN BY HN
JOB # 000-000
DATE 03-14-2024

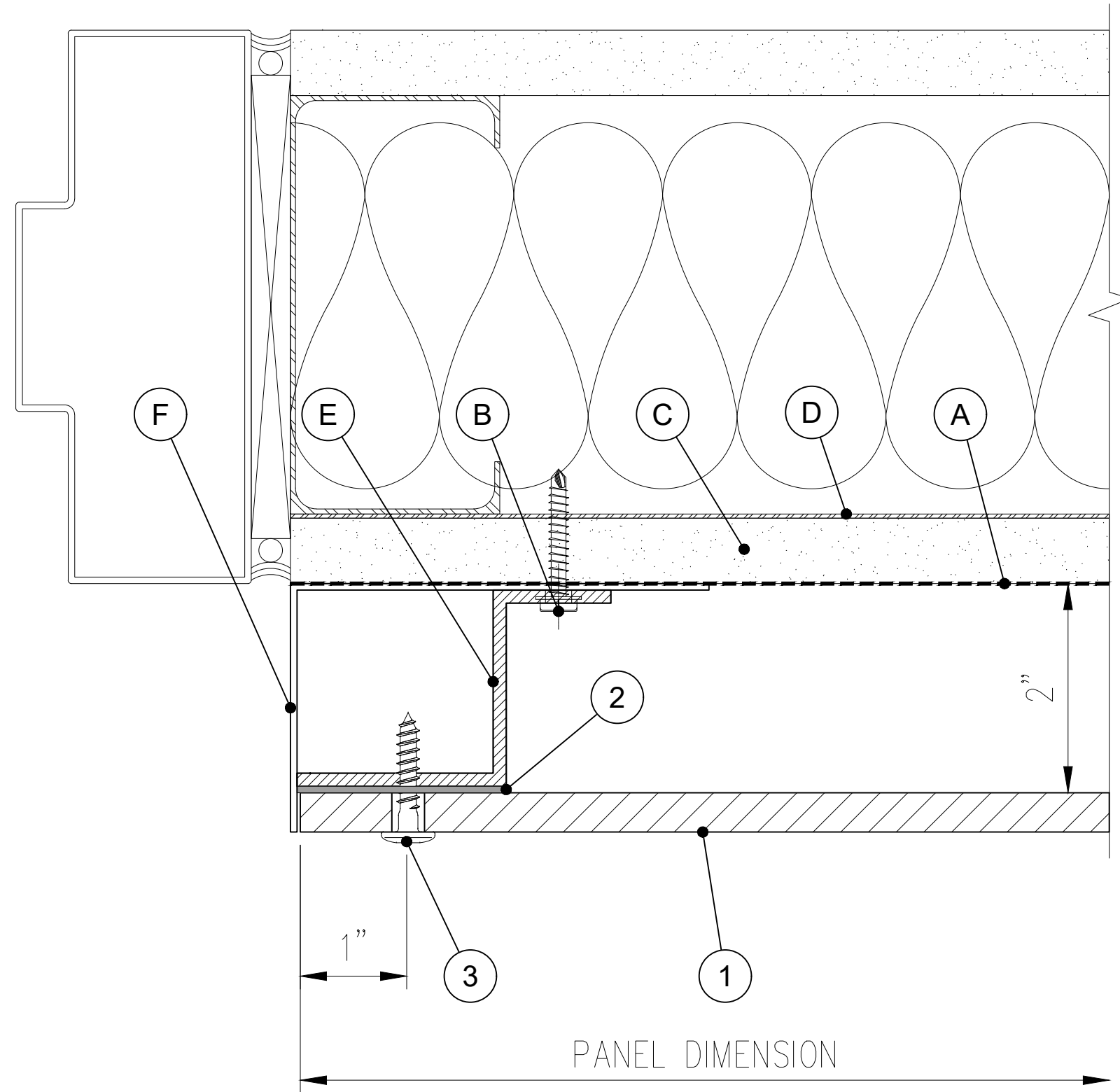
REV #	DATE	COMMENT
▲		
▲		
▲		
▲		

This document is the sole property of ALFA Panels, and all design, manufacturing, reproduction, use and sale rights regarding the same are expressly forbidden. It is submitted under a confidential relationship, for a special purpose, and the recipient, by accepting this document assumes custody and agrees that this document will not be copied or reproduced in whole or in part, nor its contents revealed in any manner or to any person except for the purpose for which it was tendered, nor any special features peculiar to this design be incorporated in other projects.

SHEET NUMBER
A01

No.	EAPI PARTS DESCRIPTION
1	ALFA PANEL (5/16", 3/8", 1/2") *
2	GASKET PAD (1/16" THICK)
3	PANEL FASTENER

NOT BY EAPI	
A	APPROVED WRB
B	CHANNEL ANCHOR
C	SHEATHING
D	STEEL BACKING PLATE
E	Z-CHANNEL
F	CLOSURE TRIM



PLEASE CONSULT WITH YOUR LOCAL SALES REPRESENTATIVE FOR INFORMATION REGARDING THE SOURCE OF SUPPLY FOR SPECIFIC COMPONENTS NOT SUPPLIED BY EAPI AND FOLLOW THE MANUFACTURER'S GUIDELINES.

THESE SHOP DRAWINGS AND EAPI'S RECOMMENDATIONS DO NOT ENCOMPASS THE SUPPORT WALL CONSTRUCTION, STRUCTURAL DETAILS OF THE SUBSTRUCTURE'S ANCHORAGE TO THE SUPPORT WALL, OR OTHER DESIGN ELEMENTS. CONSIDERING THE DIVERSE RANGE OF CONSTRUCTION CONDITIONS THAT MAY BE ENCOUNTERED, EAPI BEARS NO RESPONSIBILITY AND DOES NOT PROVIDE RECOMMENDATIONS CONCERNING SUPPORT WALL CONSTRUCTION OR THE ANCHORAGE OF THE SUBSTRUCTURE TO SUPPORT WALL ELEMENTS. EAPI STRONGLY ADVISES THAT THESE CONNECTIONS BE DEvised BY A LICENSED PROFESSIONAL, ADHERING TO APPLICABLE BUILDING CODES, PRODUCT TEST REPORTS, AND OTHER RELEVANT INSTALLATION SUPPORT DOCUMENTS.

FOR PROJECTS NECESSITATING COMPLIANCE, PLEASE CONSULT OUR WEBSITE FOR SPECIFIC DESIGN DETAILS REGARDING THE ALFA FIXING SYSTEMS. IF YOUR PROJECT REQUIRES COMPLIANCE WITH US STANDARDS, KINDLY CONTACT OUR TECHNICAL SERVICES DEPARTMENT FOR FURTHER INFORMATION.

SHIMMING SHOULD CONFORM TO GENERALLY ACCEPTED CURTAIN WALL STANDARDS, WITH A RATIO OF 1/4" PER 20'.

* THE MANUFACTURER RECOMMENDS USING A THICKNESS OF 3/8" OR MORE FOR EXTERIOR WALLS AND CEILINGS DUE TO DURABILITY AND SAFETY CONCERNS.



1- DOOR JAMB

DRAWN BY HN
JOB # 000-000
DATE 03-14-2024

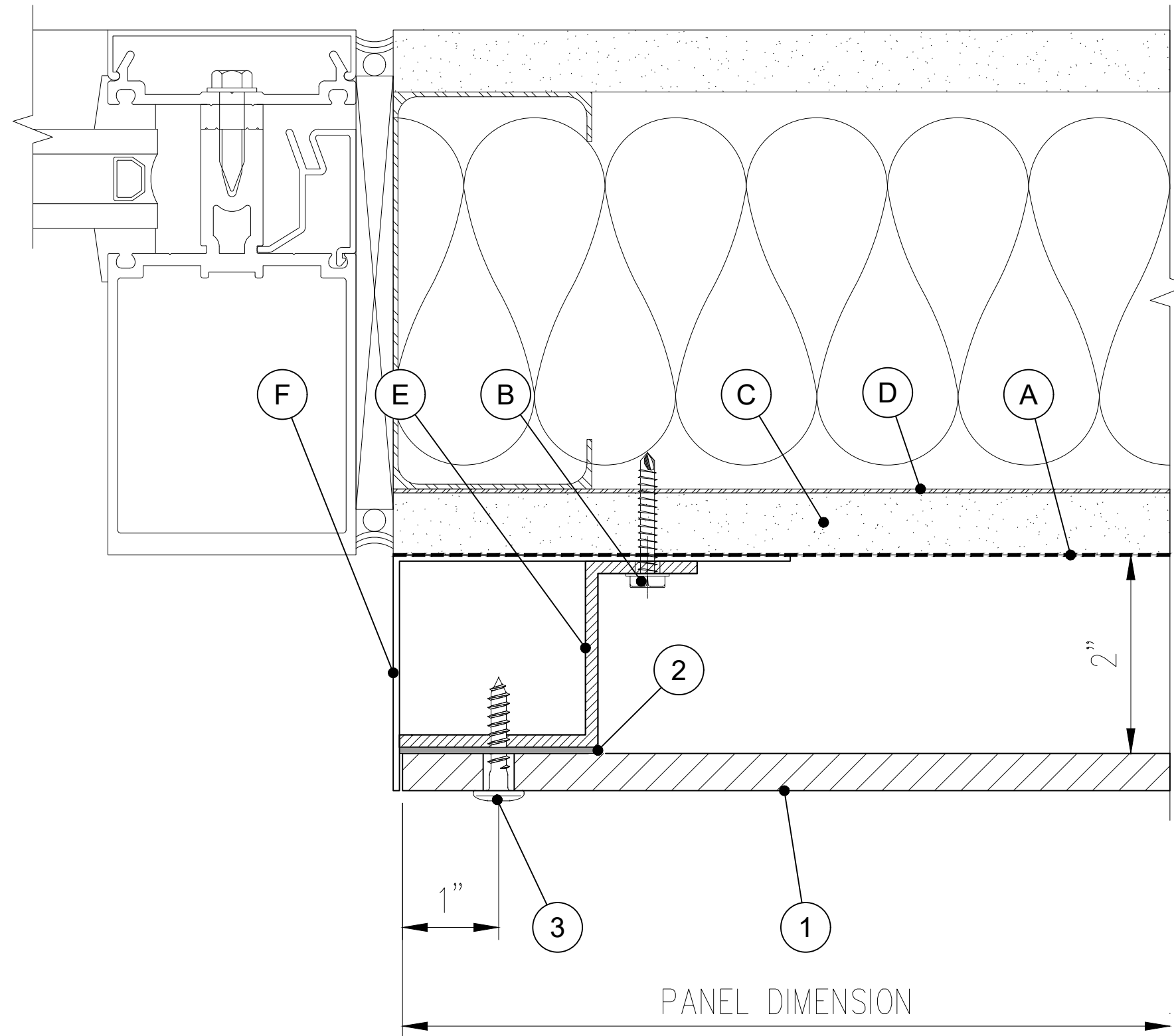
REV #	DATE	COMMENTS
▲		
▲		
▲		
▲		

This document is the sole property of ALFA Panels, and all design, manufacturing, reproduction, use and sale rights regarding the same are expressly forbidden. It is submitted under a confidential relationship, for a special purpose, and the recipient, by accepting this document assumes custody and agrees that this document will not be copied or reproduced in whole or in part, nor its contents revealed in any manner or to any person except for the purpose for which it was tendered, nor any special features peculiar to this design be incorporated in other projects.

SHEET NUMBER A02

No.	EAPI PARTS DESCRIPTION
1	ALFA PANEL (5/16", 3/8", 1/2") *
2	GASKET PAD (1/16" THICK)
3	PANEL FASTENER

NOT BY EAPI	
A	APPROVED WRB
B	CHANNEL ANCHOR
C	SHEATHING
D	STEEL BACKING PLATE
E	Z-CHANNEL
F	CLOSURE TRIM



PLEASE CONSULT WITH YOUR LOCAL SALES REPRESENTATIVE FOR INFORMATION REGARDING THE SOURCE OF SUPPLY FOR SPECIFIC COMPONENTS NOT SUPPLIED BY EAPI AND FOLLOW THE MANUFACTURER'S GUIDELINES.

THESE SHOP DRAWINGS AND EAPI'S RECOMMENDATIONS DO NOT ENCOMPASS THE SUPPORT WALL CONSTRUCTION, STRUCTURAL DETAILS OF THE SUBSTRUCTURE'S ANCHORAGE TO THE SUPPORT WALL, OR OTHER DESIGN ELEMENTS. CONSIDERING THE DIVERSE RANGE OF CONSTRUCTION CONDITIONS THAT MAY BE ENCOUNTERED, EAPI BEARS NO RESPONSIBILITY AND DOES NOT PROVIDE RECOMMENDATIONS CONCERNING SUPPORT WALL CONSTRUCTION OR THE ANCHORAGE OF THE SUBSTRUCTURE TO SUPPORT WALL ELEMENTS. EAPI STRONGLY ADVISES THAT THESE CONNECTIONS BE DEvised BY A LICENSED PROFESSIONAL, ADHERING TO APPLICABLE BUILDING CODES, PRODUCT TEST REPORTS, AND OTHER RELEVANT INSTALLATION SUPPORT DOCUMENTS.

FOR PROJECTS NECESSITATING COMPLIANCE, PLEASE CONSULT OUR WEBSITE FOR SPECIFIC DESIGN DETAILS REGARDING THE ALFA FIXING SYSTEMS. IF YOUR PROJECT REQUIRES COMPLIANCE WITH US STANDARDS, KINDLY CONTACT OUR TECHNICAL SERVICES DEPARTMENT FOR FURTHER INFORMATION.

SHIMMING SHOULD CONFORM TO GENERALLY ACCEPTED CURTAIN WALL STANDARDS, WITH A RATIO OF 1/4" PER 20'.

* THE MANUFACTURER RECOMMENDS USING A THICKNESS OF 3/8" OR MORE FOR EXTERIOR WALLS AND CEILINGS DUE TO DURABILITY AND SAFETY CONCERNS.



2- WINDOW JAMB

DRAWN BY
HN

JOB #
000-000

DATE
03-14-2024

REV #	DATE	COMMENTS
▲		
▲		
▲		
▲		

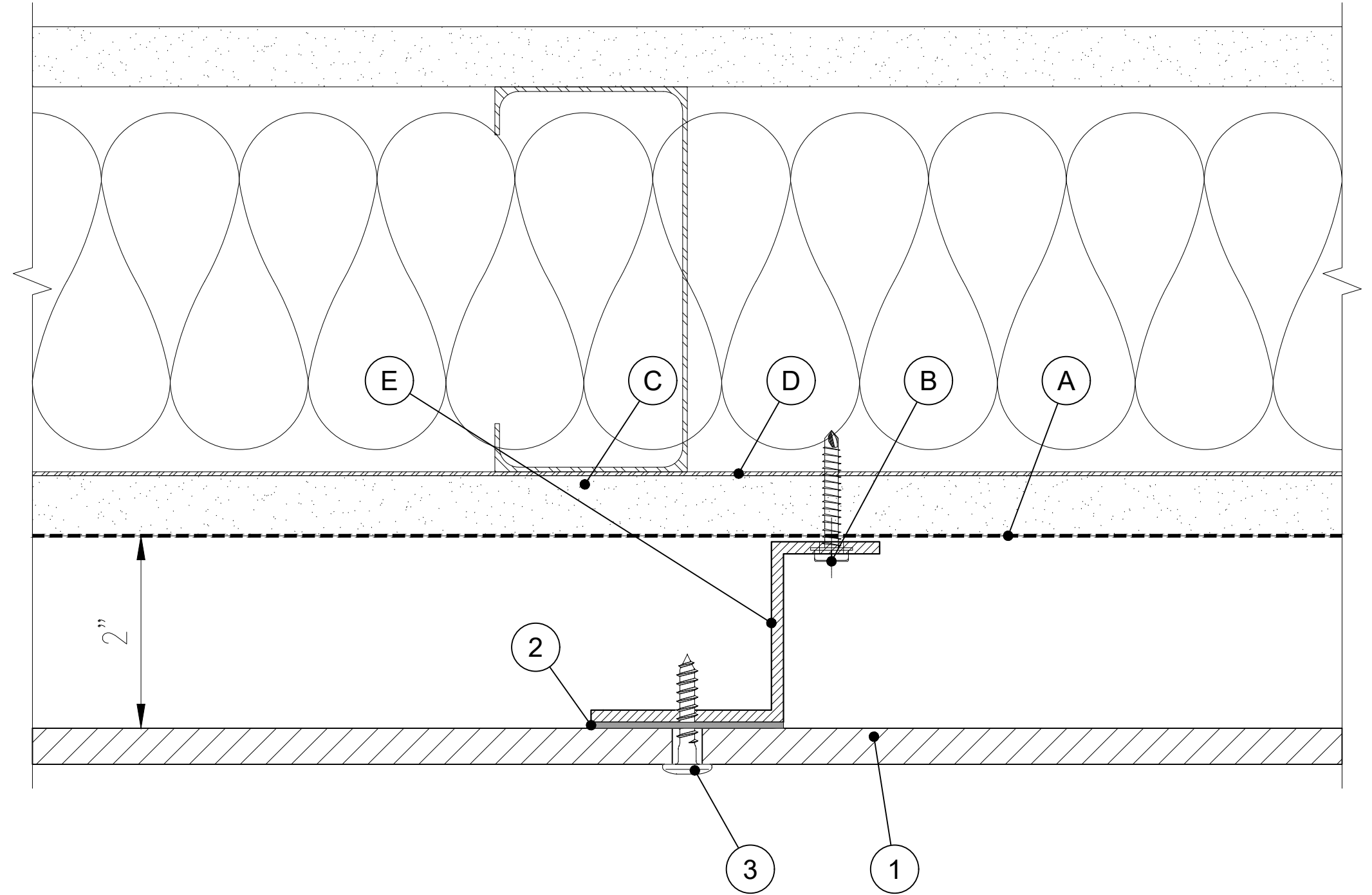
This document is the sole property of ALFA Panels, and all design, manufacturing, reproduction, use and sale rights regarding the same are expressly forbidden. It is submitted under a confidential relationship, for a special purpose, and the recipient, by accepting this document assumes custody and agrees that this document will not be copied or reproduced in whole or in part, nor its contents revealed in any manner or to any person except for the purpose for which it was tendered, nor any special features peculiar to this design be incorporated in other projects.

SHEET NUMBER

A03

No.	EAPI PARTS DESCRIPTION
1	ALFA PANEL (5/16",3/8",1/2") *
2	GASKET PAD (1/16" THICK)
3	PANEL FASTENER

NOT BY EAPI	
A	APPROVED WRB
B	CHANNEL ANCHOR
C	SHEATHING
D	STEEL BACKING PLATE
E	Z- CHANNEL
F	CLOSURE TRIM



PLEASE CONSULT WITH YOUR LOCAL SALES REPRESENTATIVE FOR INFORMATION REGARDING THE SOURCE OF SUPPLY FOR SPECIFIC COMPONENTS NOT SUPPLIED BY EAPI AND FOLLOW THE MANUFACTURER'S GUIDELINES.

THESE SHOP DRAWINGS AND EAPI'S RECOMMENDATIONS DO NOT ENCOMPASS THE SUPPORT WALL CONSTRUCTION, STRUCTURAL DETAILS OF THE SUBSTRUCTURE'S ANCHORAGE TO THE SUPPORT WALL, OR OTHER DESIGN ELEMENTS. CONSIDERING THE DIVERSE RANGE OF CONSTRUCTION CONDITIONS THAT MAY BE ENCOUNTERED, EAPI BEARS NO RESPONSIBILITY AND DOES NOT PROVIDE RECOMMENDATIONS CONCERNING SUPPORT WALL CONSTRUCTION OR THE ANCHORAGE OF THE SUBSTRUCTURE TO SUPPORT WALL ELEMENTS. EAPI STRONGLY ADVISES THAT THESE CONNECTIONS BE DEvised BY A LICENSED PROFESSIONAL, ADHERING TO APPLICABLE BUILDING CODES, PRODUCT TEST REPORTS, AND OTHER RELEVANT INSTALLATION SUPPORT DOCUMENTS.

FOR PROJECTS NECESSITATING COMPLIANCE, PLEASE CONSULT OUR WEBSITE FOR SPECIFIC DESIGN DETAILS REGARDING THE ALFA FIXING SYSTEMS. IF YOUR PROJECT REQUIRES COMPLIANCE WITH US STANDARDS, KINDLY CONTACT OUR TECHNICAL SERVICES DEPARTMENT FOR FURTHER INFORMATION.

SHIMMING SHOULD CONFORM TO GENERALLY ACCEPTED CURTAIN WALL STANDARDS, WITH A RATIO OF 1/4" PER 20'.

* THE MANUFACTURER RECOMMENDS USING A THICKNESS OF 3/8" OR MORE FOR EXTERIOR WALLS AND CEILINGS DUE TO DURABILITY AND SAFETY CONCERNS.



3- VERTICAL MID PANEL

DRAWN BY
HN

JOB #
000-000

DATE
03-14-2024

REV #	DATE	COMMENTS
▲		
▲		
▲		
▲		

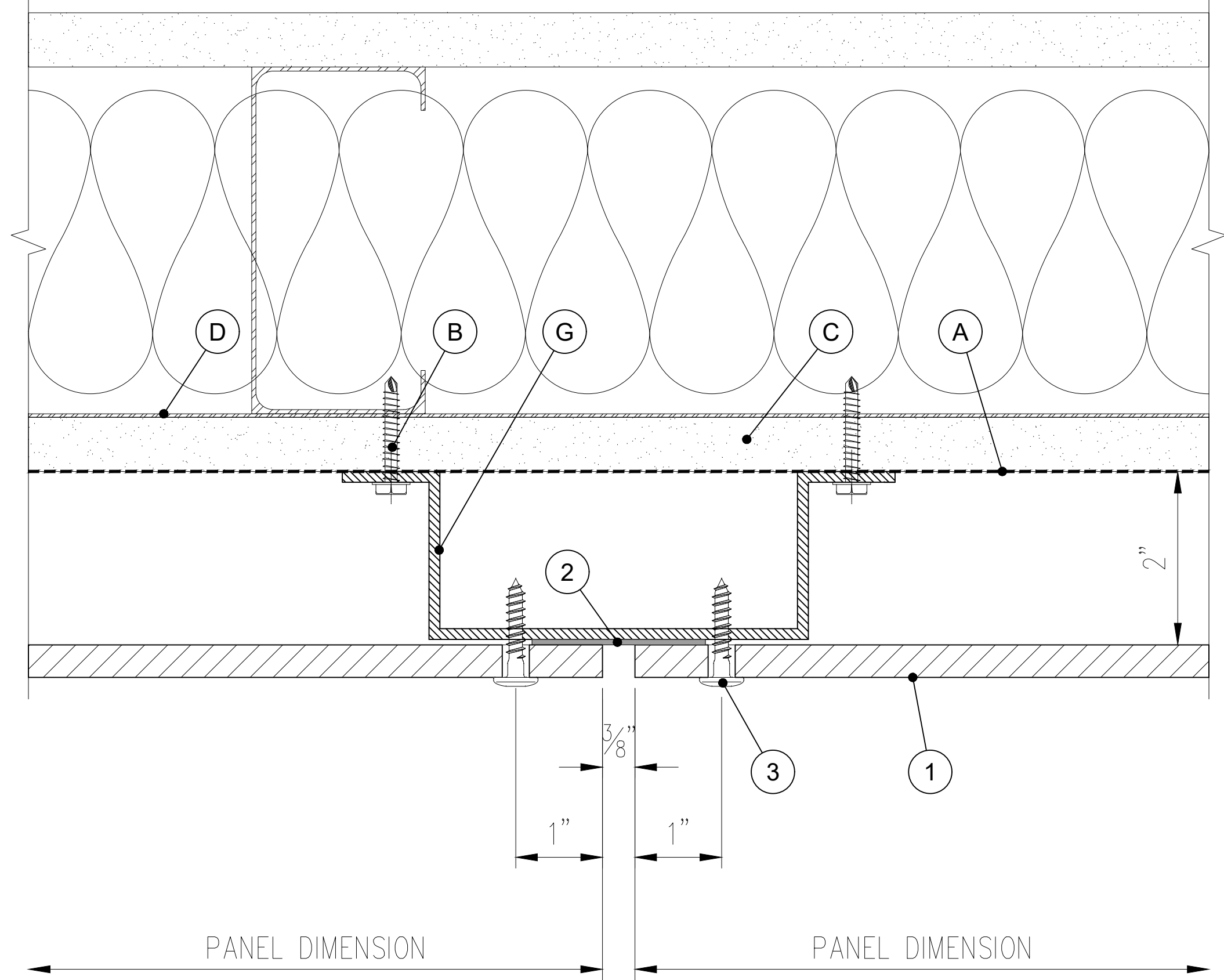
This document is the sole property of ALFA Panels, and all design, manufacturing, reproduction, use and sale rights regarding the same are expressly forbidden. It is submitted under a confidential relationship, for a special purpose, and the recipient, by accepting this document assumes custody and agrees that this document will not be copied or reproduced in whole or in part, nor its contents revealed in any manner or to any person except for the purpose for which it was tendered, nor any special features peculiar to this design be incorporated in other projects.

SHEET NUMBER

A04

No.	EAPI PARTS DESCRIPTION
1	ALFA PANEL (5/16", 3/8", 1/2")*
2	GASKET PAD (1/16" THICK)
3	PANEL FASTENER

	NOT BY EAPI
A	APPROVED WRB
B	CHANNEL ANCHOR
C	SHEATHING
D	STEEL BACKING PLATE
E	Z-CHANNEL
F	CLOSURE TRIM
G	HAT CHANNEL



PLEASE CONSULT WITH YOUR LOCAL SALES REPRESENTATIVE FOR INFORMATION REGARDING THE SOURCE OF SUPPLY FOR SPECIFIC COMPONENTS NOT SUPPLIED BY EAPI AND FOLLOW THE MANUFACTURER'S GUIDELINES.

THESE SHOP DRAWINGS AND EAPI'S RECOMMENDATIONS DO NOT ENCOMPASS THE SUPPORT WALL CONSTRUCTION, STRUCTURAL DETAILS OF THE SUBSTRUCTURE'S ANCHORAGE TO THE SUPPORT WALL, OR OTHER DESIGN ELEMENTS. CONSIDERING THE DIVERSE RANGE OF CONSTRUCTION CONDITIONS THAT MAY BE ENCOUNTERED, EAPI BEARS NO RESPONSIBILITY AND DOES NOT PROVIDE RECOMMENDATIONS CONCERNING SUPPORT WALL CONSTRUCTION OR THE ANCHORAGE OF THE SUBSTRUCTURE TO SUPPORT WALL ELEMENTS. EAPI STRONGLY ADVISES THAT THESE CONNECTIONS BE DEvised BY A LICENSED PROFESSIONAL, ADHERING TO APPLICABLE BUILDING CODES, PRODUCT TEST REPORTS, AND OTHER RELEVANT INSTALLATION SUPPORT DOCUMENTS.

FOR PROJECTS NECESSITATING COMPLIANCE, PLEASE CONSULT OUR WEBSITE FOR SPECIFIC DESIGN DETAILS REGARDING THE ALFA FIXING SYSTEMS. IF YOUR PROJECT REQUIRES COMPLIANCE WITH US STANDARDS, KINDLY CONTACT OUR TECHNICAL SERVICES DEPARTMENT FOR FURTHER INFORMATION.

SHIMMING SHOULD CONFORM TO GENERALLY ACCEPTED CURTAIN WALL STANDARDS, WITH A RATIO OF 1/4" PER 20'.

* THE MANUFACTURER RECOMMENDS USING A THICKNESS OF 3/8" OR MORE FOR EXTERIOR WALLS AND CEILINGS DUE TO DURABILITY AND SAFETY CONCERNS.



4- VERTICAL PANEL JOINT

DRAWN BY
HN

JOB #
000-000

DATE
03-14-2024

REV #	DATE	COMMENTS
▲		
▲		
▲		
▲		

This document is the sole property of ALFA Panels, and all design, manufacturing, reproduction, use and sale rights regarding the same are expressly forbidden. It is submitted under a confidential relationship, for a special purpose, and the recipient, by accepting this document assumes custody and agrees that this document will not be copied or reproduced in whole or in part, nor its contents revealed in any manner or to any person except for the purpose for which it was tendered, nor any special features peculiar to this design be incorporated in other projects.

SHEET NUMBER

A05

No.	EAPI PARTS DESCRIPTION
1	ALFA PANEL (5/16", 3/8", 1/2") *
2	GASKET PAD (1/16" THICK)
3	PANEL FASTENER

	NOT BY EAPI
A	APPROVED WRB
B	CHANNEL ANCHOR
C	SHEATHING
D	STEEL BACKING PLATE
E	Z- CHANNEL
F	CLOSURE TRIM

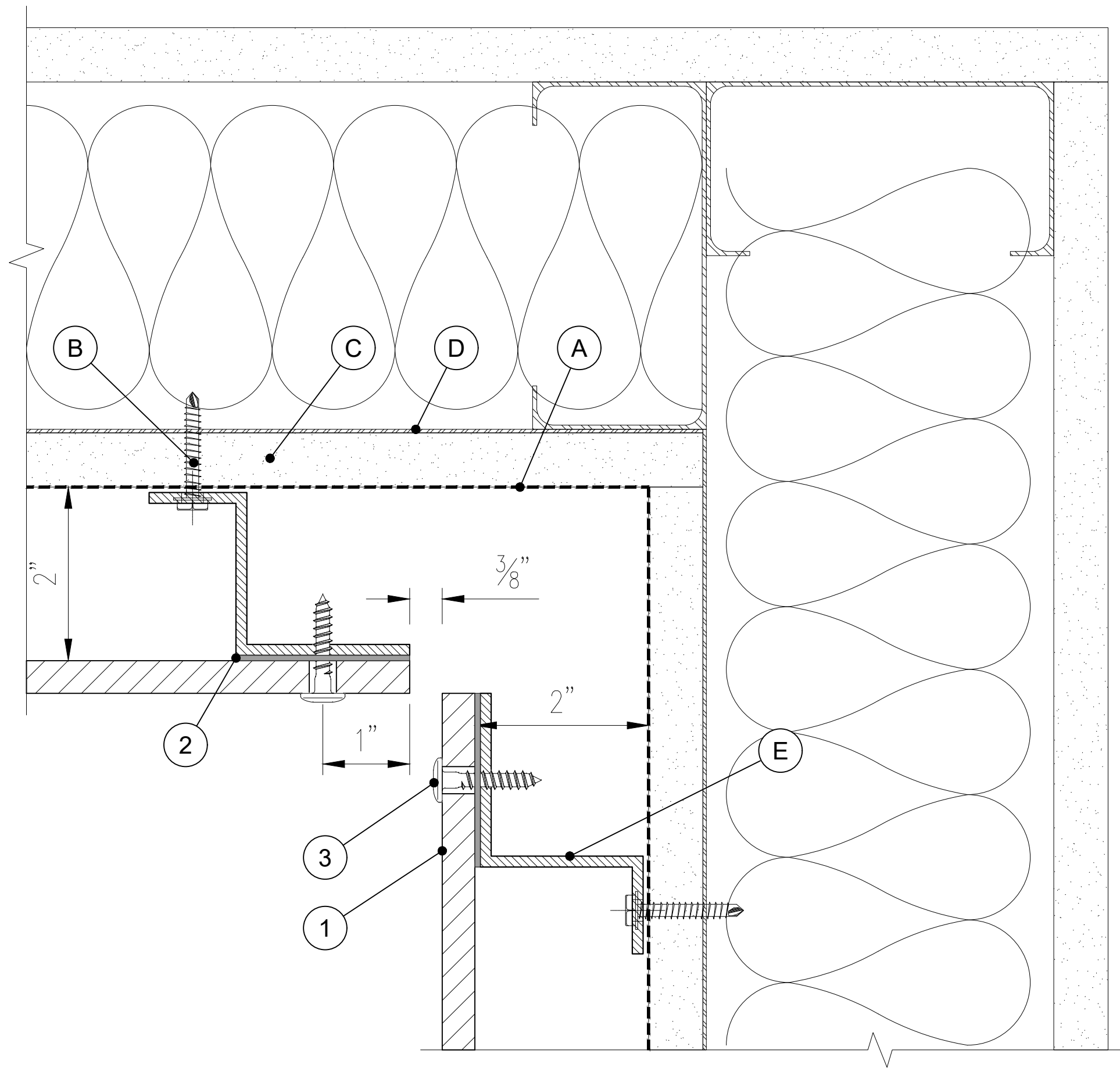
PLEASE CONSULT WITH YOUR LOCAL SALES REPRESENTATIVE FOR INFORMATION REGARDING THE SOURCE OF SUPPLY FOR SPECIFIC COMPONENTS NOT SUPPLIED BY EAPI AND FOLLOW THE MANUFACTURER'S GUIDELINES.

THESE SHOP DRAWINGS AND EAPI'S RECOMMENDATIONS DO NOT ENCOMPASS THE SUPPORT WALL CONSTRUCTION, STRUCTURAL DETAILS OF THE SUBSTRUCTURE'S ANCHORAGE TO THE SUPPORT WALL, OR OTHER DESIGN ELEMENTS. CONSIDERING THE DIVERSE RANGE OF CONSTRUCTION CONDITIONS THAT MAY BE ENCOUNTERED, EAPI BEARS NO RESPONSIBILITY AND DOES NOT PROVIDE RECOMMENDATIONS CONCERNING SUPPORT WALL CONSTRUCTION OR THE ANCHORAGE OF THE SUBSTRUCTURE TO SUPPORT WALL ELEMENTS. EAPI STRONGLY ADVISES THAT THESE CONNECTIONS BE DEVISED BY A LICENSED PROFESSIONAL, ADHERING TO APPLICABLE BUILDING CODES, PRODUCT TEST REPORTS, AND OTHER RELEVANT INSTALLATION SUPPORT DOCUMENTS.

FOR PROJECTS NECESSITATING COMPLIANCE, PLEASE CONSULT OUR WEBSITE FOR SPECIFIC DESIGN DETAILS REGARDING THE ALFA FIXING SYSTEMS. IF YOUR PROJECT REQUIRES COMPLIANCE WITH US STANDARDS, KINDLY CONTACT OUR TECHNICAL SERVICES DEPARTMENT FOR FURTHER INFORMATION.

SHIMMING SHOULD CONFORM TO GENERALLY ACCEPTED CURTAIN WALL STANDARDS, WITH A RATIO OF 1/4" PER 20'.

* THE MANUFACTURER RECOMMENDS USING A THICKNESS OF 3/8" OR MORE FOR EXTERIOR WALLS AND CEILINGS DUE TO DURABILITY AND SAFETY CONCERNS.



5- INSIDE CORNER

DRAWN BY
HN

JOB #
000-000

DATE
03-14-2024

REV #	DATE	COMMENTS
▲		
▲		
▲		
▲		

This document is the sole property of ALFA Panels, and all design, manufacturing, reproduction, use and sale rights regarding the same are expressly forbidden. It is submitted under a confidential relationship, for a special purpose, and the recipient, by accepting this document assumes custody and agrees that this document will not be copied or reproduced in whole or in part, nor its contents revealed in any manner or to any person except for the purpose for which it was tendered, nor any special features peculiar to this design be incorporated in other projects.

SHEET NUMBER

A06

No.	EAPI PARTS DESCRIPTION
1	ALFA PANEL (5/16", 3/8", 1/2") *
2	GASKET PAD (1/16" THICK)
3	PANEL FASTENER

NOT BY EAPI	
A	APPROVED WRB
B	CHANNEL ANCHOR
C	SHEATHING
D	STEEL BACKING PLATE
E	Z-CHANNEL
F	CLOSURE TRIM

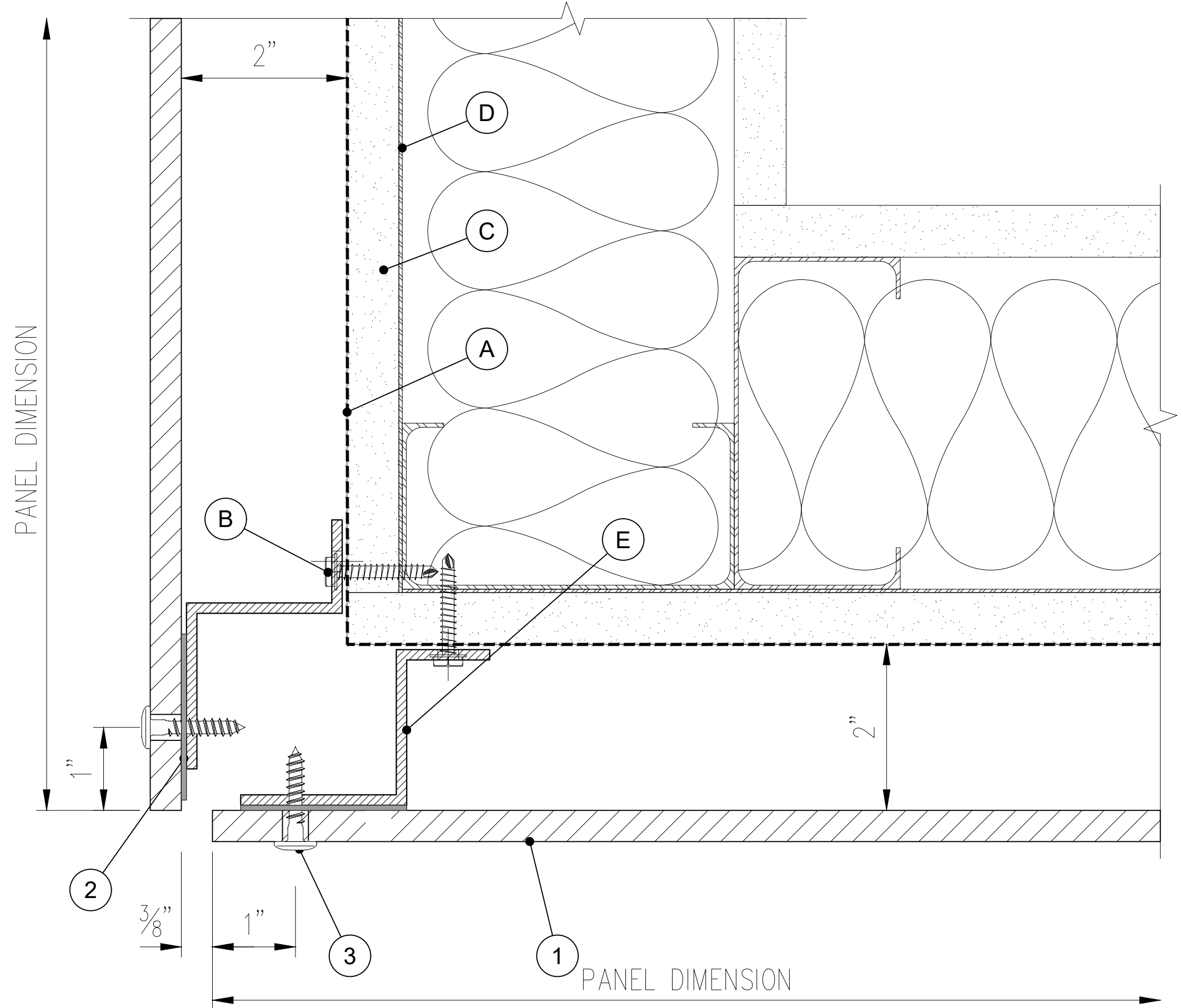
PLEASE CONSULT WITH YOUR LOCAL SALES REPRESENTATIVE FOR INFORMATION REGARDING THE SOURCE OF SUPPLY FOR SPECIFIC COMPONENTS NOT SUPPLIED BY EAPI AND FOLLOW THE MANUFACTURER'S GUIDELINES.

THESE SHOP DRAWINGS AND EAPI'S RECOMMENDATIONS DO NOT ENCOMPASS THE SUPPORT WALL CONSTRUCTION, STRUCTURAL DETAILS OF THE SUBSTRUCTURE'S ANCHORAGE TO THE SUPPORT WALL, OR OTHER DESIGN ELEMENTS. CONSIDERING THE DIVERSE RANGE OF CONSTRUCTION CONDITIONS THAT MAY BE ENCOUNTERED, EAPI BEARS NO RESPONSIBILITY AND DOES NOT PROVIDE RECOMMENDATIONS CONCERNING SUPPORT WALL CONSTRUCTION OR THE ANCHORAGE OF THE SUBSTRUCTURE TO SUPPORT WALL ELEMENTS. EAPI STRONGLY ADVISES THAT THESE CONNECTIONS BE DEvised BY A LICENSED PROFESSIONAL, ADHERING TO APPLICABLE BUILDING CODES, PRODUCT TEST REPORTS, AND OTHER RELEVANT INSTALLATION SUPPORT DOCUMENTS.

FOR PROJECTS NECESSITATING COMPLIANCE, PLEASE CONSULT OUR WEBSITE FOR SPECIFIC DESIGN DETAILS REGARDING THE ALFA FIXING SYSTEMS. IF YOUR PROJECT REQUIRES COMPLIANCE WITH US STANDARDS, KINDLY CONTACT OUR TECHNICAL SERVICES DEPARTMENT FOR FURTHER INFORMATION.

SHIMMING SHOULD CONFORM TO GENERALLY ACCEPTED CURTAIN WALL STANDARDS, WITH A RATIO OF 1/4" PER 20'.

* THE MANUFACTURER RECOMMENDS USING A THICKNESS OF 3/8" OR MORE FOR EXTERIOR WALLS AND CEILINGS DUE TO DURABILITY AND SAFETY CONCERNS.



6a- OUTSIDE CORNER

DRAWN BY
HN

JOB #
000-000

DATE
03-14-2024

REV #	DATE	COMMENT
▲		
▲		
▲		
▲		

This document is the sole property of ALFA Panels, and all design, manufacturing, reproduction, use and sale rights regarding the same are expressly forbidden. It is submitted under a confidential relationship, for a special purpose, and the recipient, by accepting this document assumes custody and agrees that this document will not be copied or reproduced in whole or in part, nor its contents revealed in any manner or to any person except for the purpose for which it was tendered, nor any special features peculiar to this design be incorporated in other projects.

SHEET NUMBER

A07

No.	EAPI PARTS DESCRIPTION
1	ALFA PANEL (5/16", 3/8", 1/2") *
2	GASKET PAD (1/16" THICK)
3	PANEL FASTENER

	NOT BY EAPI
A	APPROVED WRB
B	CHANNEL ANCHOR
C	SHEATHING
D	STEEL BACKING PLATE
E	Z-CHANNEL
F	CLOSURE TRIM

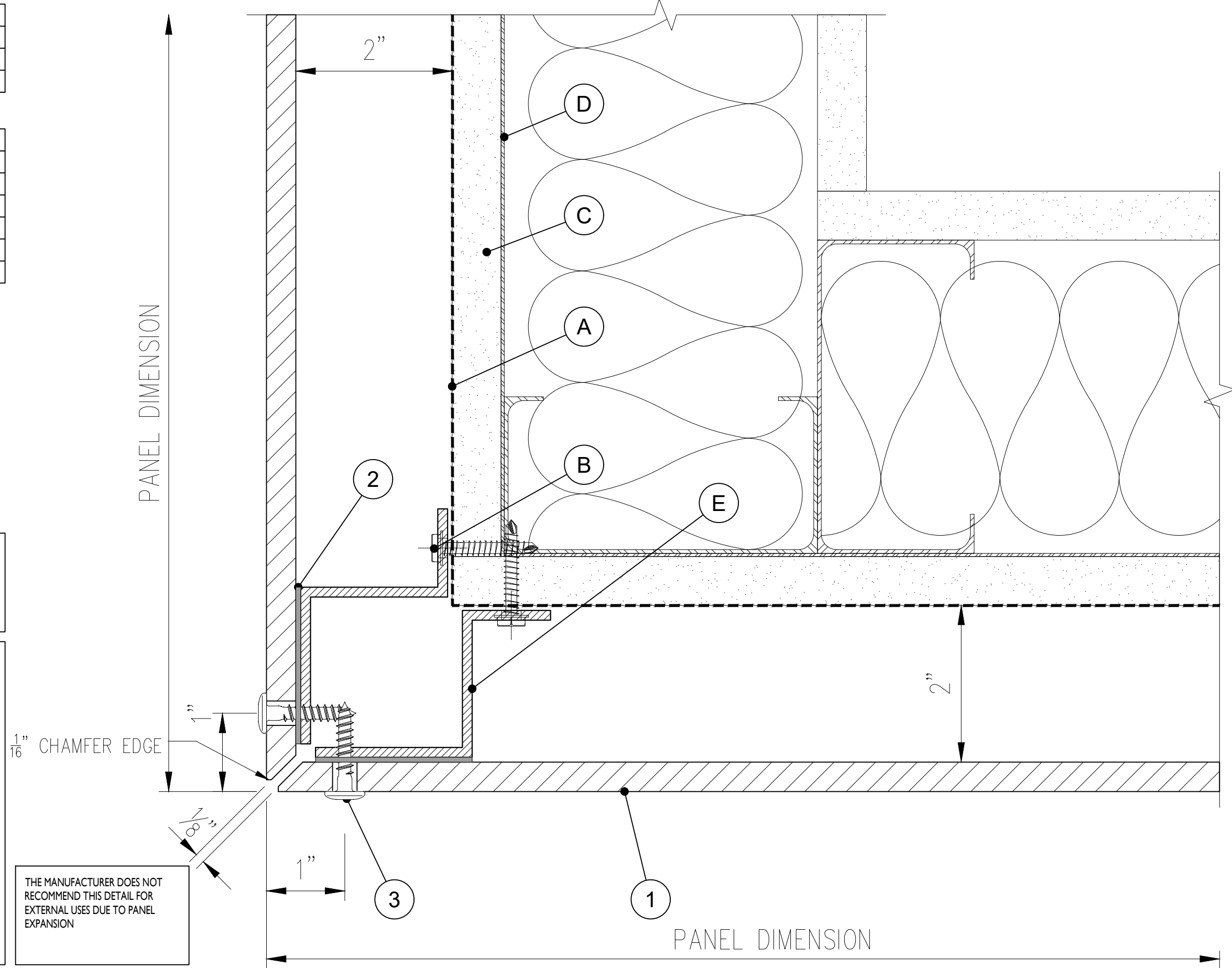
PLEASE CONSULT WITH YOUR LOCAL SALES REPRESENTATIVE FOR INFORMATION REGARDING THE SOURCE OF SUPPLY FOR SPECIFIC COMPONENTS NOT SUPPLIED BY EAPI AND FOLLOW THE MANUFACTURER'S GUIDELINES.

THESE SHOP DRAWINGS AND EAPI'S RECOMMENDATIONS DO NOT ENCOMPASS THE SUPPORT WALL CONSTRUCTION, STRUCTURAL DETAILS OF THE SUBSTRUCTURE'S ANCHORAGE TO THE SUPPORT WALL, OR OTHER DESIGN ELEMENTS. CONSIDERING THE DIVERSE RANGE OF CONSTRUCTION CONDITIONS THAT MAY BE ENCOUNTERED, EAPI BEARS NO RESPONSIBILITY AND DOES NOT PROVIDE RECOMMENDATIONS CONCERNING SUPPORT WALL CONSTRUCTION OR THE ANCHORAGE OF THE SUBSTRUCTURE TO SUPPORT WALL ELEMENTS. EAPI STRONGLY ADVISES THAT THESE CONNECTIONS BE DEvised BY A LICENSED PROFESSIONAL, ADHERING TO APPLICABLE BUILDING CODES, PRODUCT TEST REPORTS, AND OTHER RELEVANT INSTALLATION SUPPORT DOCUMENTS.

FOR PROJECTS NECESSITATING COMPLIANCE, PLEASE CONSULT OUR WEBSITE FOR SPECIFIC DESIGN DETAILS REGARDING THE ALFA FIXING SYSTEMS. IF YOUR PROJECT REQUIRES COMPLIANCE WITH US STANDARDS, KINDLY CONTACT OUR TECHNICAL SERVICES DEPARTMENT FOR FURTHER INFORMATION.

SHIMMING SHOULD CONFORM TO GENERALLY ACCEPTED CURTAIN WALL STANDARDS, WITH A RATIO OF 1/4" PER 20'.

* THE MANUFACTURER RECOMMENDS USING A THICKNESS OF 3/8" OR MORE FOR EXTERIOR WALLS AND CEILINGS DUE TO DURABILITY AND SAFETY CONCERNS.



THE MANUFACTURER DOES NOT RECOMMEND THIS DETAIL FOR EXTERNAL USES DUE TO PANEL EXPANSION



6b- OUTSIDE MITERED CORNER

DRAWN BY HN
JOB # 000-000
DATE 03-14-2024

REV #	DATE	COMMENT
▲		
▲		
▲		
▲		

This document is the sole property of ALFA Panels, and all design, manufacturing, reproduction, use and sale rights regarding the same are expressly forbidden. It is submitted under a confidential relationship, for a special purpose, and the recipient, by accepting this document assumes custody and agrees that this document will not be copied or reproduced in whole or in part, nor its contents revealed in any manner or to any person except for the purpose for which it was tendered, nor any special features peculiar to this design be incorporated in other projects.

SHEET NUMBER A08

No.	EAPI PARTS DESCRIPTION
1	ALFA PANEL (5/16", 3/8", 1/2") *
2	GASKET PAD (1/16" THICK)
3	PANEL FASTENER

	NOT BY EAPI
A	APPROVED WRB
B	CHANNEL ANCHOR
C	SHEATHING
D	STEEL BACKING PLATE
E	Z-CHANNEL
F	CLOSURE TRIM

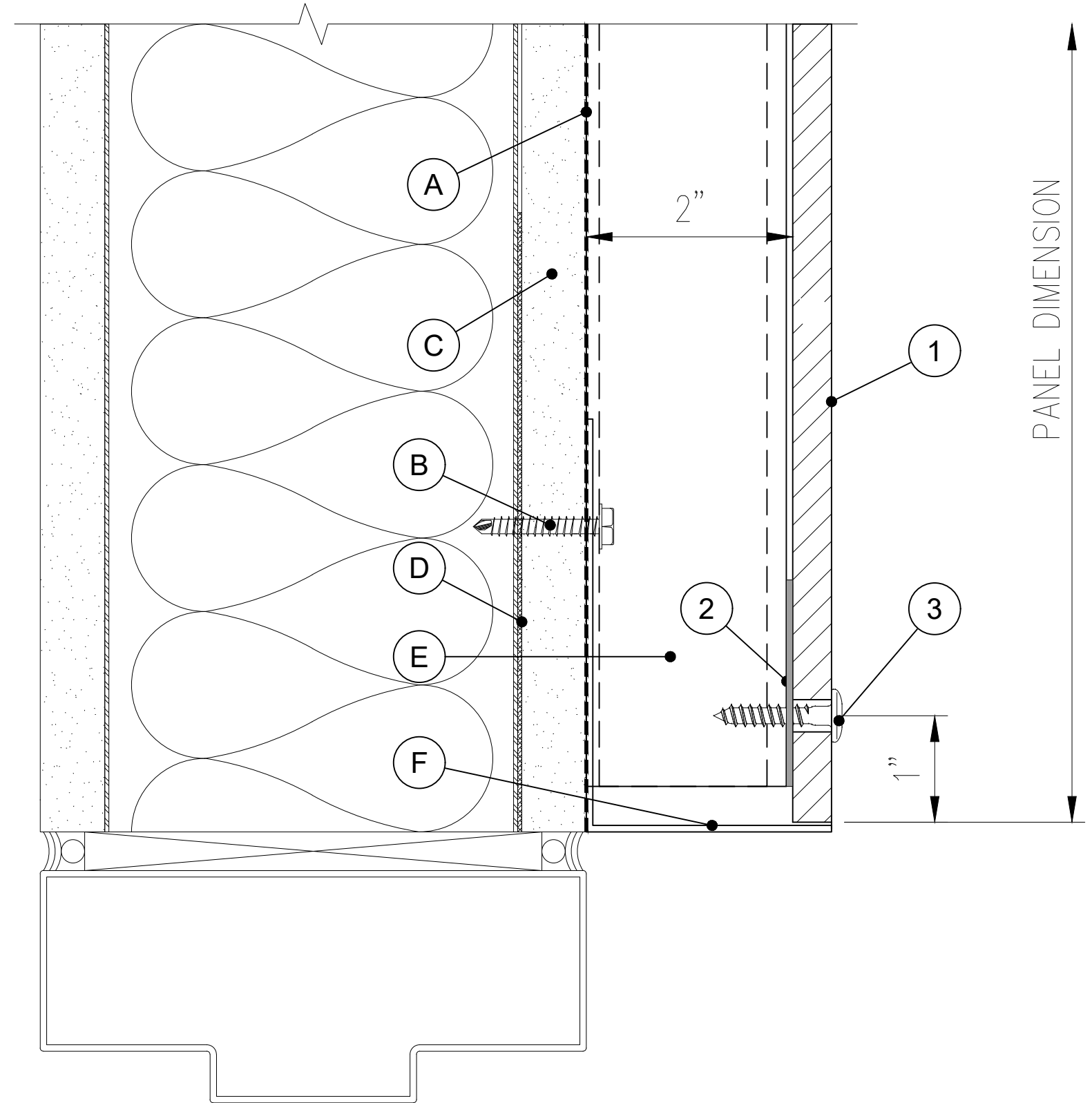
PLEASE CONSULT WITH YOUR LOCAL SALES REPRESENTATIVE FOR INFORMATION REGARDING THE SOURCE OF SUPPLY FOR SPECIFIC COMPONENTS NOT SUPPLIED BY EAPI AND FOLLOW THE MANUFACTURER'S GUIDELINES.

THESE SHOP DRAWINGS AND EAPI'S RECOMMENDATIONS DO NOT ENCOMPASS THE SUPPORT WALL CONSTRUCTION, STRUCTURAL DETAILS OF THE SUBSTRUCTURE'S ANCHORAGE TO THE SUPPORT WALL, OR OTHER DESIGN ELEMENTS. CONSIDERING THE DIVERSE RANGE OF CONSTRUCTION CONDITIONS THAT MAY BE ENCOUNTERED, EAPI BEARS NO RESPONSIBILITY AND DOES NOT PROVIDE RECOMMENDATIONS CONCERNING SUPPORT WALL CONSTRUCTION OR THE ANCHORAGE OF THE SUBSTRUCTURE TO SUPPORT WALL ELEMENTS. EAPI STRONGLY ADVISES THAT THESE CONNECTIONS BE DEvised BY A LICENSED PROFESSIONAL, ADHERING TO APPLICABLE BUILDING CODES, PRODUCT TEST REPORTS, AND OTHER RELEVANT INSTALLATION SUPPORT DOCUMENTS.

FOR PROJECTS NECESSITATING COMPLIANCE, PLEASE CONSULT OUR WEBSITE FOR SPECIFIC DESIGN DETAILS REGARDING THE ALFA FIXING SYSTEMS. IF YOUR PROJECT REQUIRES COMPLIANCE WITH US STANDARDS, KINDLY CONTACT OUR TECHNICAL SERVICES DEPARTMENT FOR FURTHER INFORMATION.

SHIMMING SHOULD CONFORM TO GENERALLY ACCEPTED CURTAIN WALL STANDARDS, WITH A RATIO OF 1/4" PER 20'.

* THE MANUFACTURER RECOMMENDS USING A THICKNESS OF 3/8" OR MORE FOR EXTERIOR WALLS AND CEILINGS DUE TO DURABILITY AND SAFETY CONCERNS.



7- DOOR HEAD

DRAWN BY HN
JOB # 000-000
DATE 03-14-2024

REV #	DATE	COMMENT
▲		
▲		
▲		
▲		

This document is the sole property of ALFA Panels, and all design, manufacturing, reproduction, use and sale rights regarding the same are expressly forbidden. It is submitted under a confidential relationship, for a special purpose, and the recipient, by accepting this document assumes custody and agrees that this document will not be copied or reproduced in whole or in part, nor its contents revealed in any manner or to any person except for the purpose for which it was tendered, nor any special features peculiar to this design be incorporated in other projects.

SHEET NUMBER A09

No.	EAPI PARTS DESCRIPTION
1	ALFA PANEL (5/16", 3/8", 1/2") *
2	GASKET PAD (1/16" THICK)
3	PANEL FASTENER

NOT BY EAPI	
A	APPROVED WRB
B	CHANNEL ANCHOR
C	SHEATHING
D	STEEL BACKING PLATE
E	Z-CHANNEL
F	CLOSURE TRIM

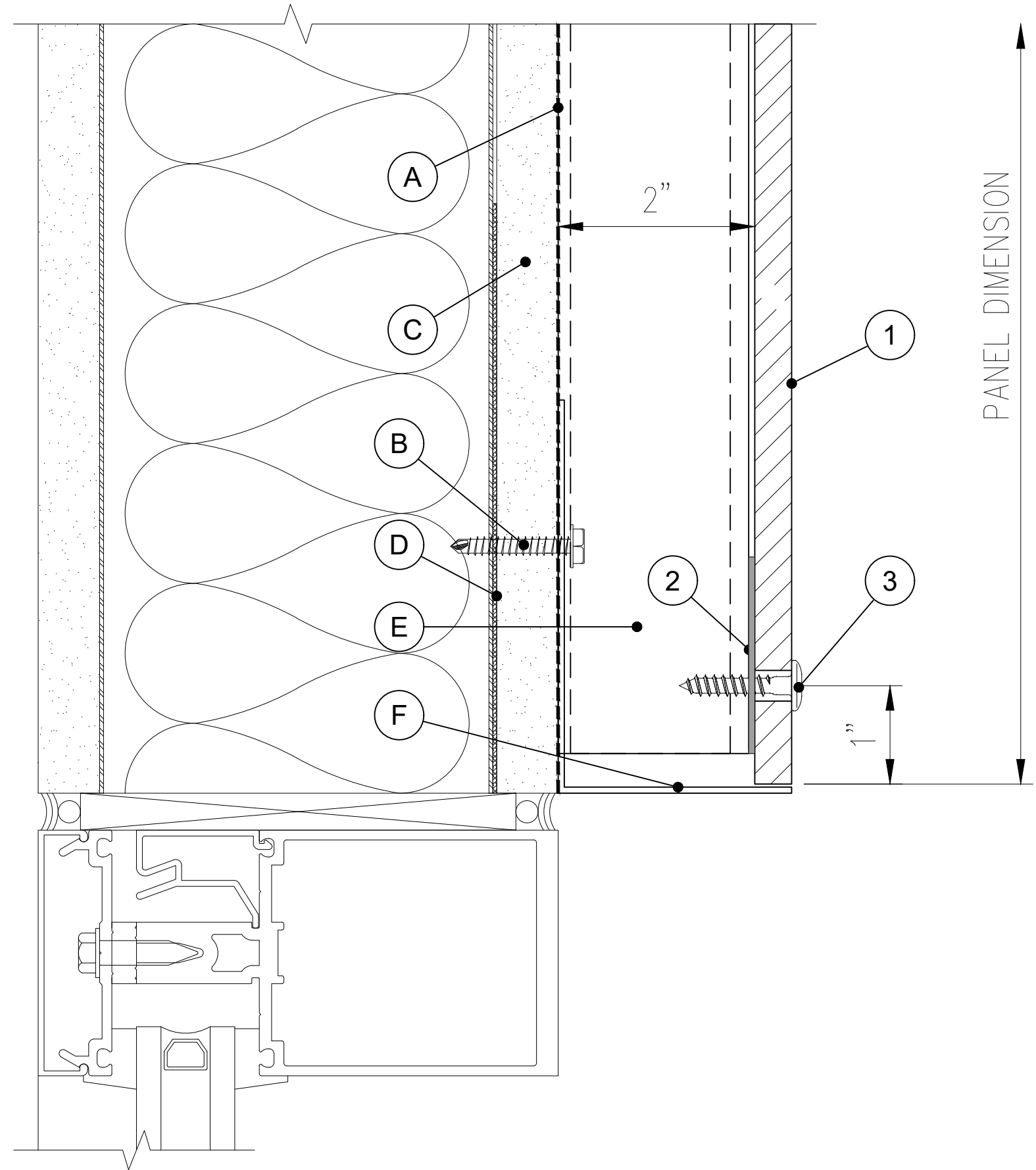
PLEASE CONSULT WITH YOUR LOCAL SALES REPRESENTATIVE FOR INFORMATION REGARDING THE SOURCE OF SUPPLY FOR SPECIFIC COMPONENTS NOT SUPPLIED BY EAPI AND FOLLOW THE MANUFACTURER'S GUIDELINES.

THESE SHOP DRAWINGS AND EAPI'S RECOMMENDATIONS DO NOT ENCOMPASS THE SUPPORT WALL CONSTRUCTION, STRUCTURAL DETAILS OF THE SUBSTRUCTURE'S ANCHORAGE TO THE SUPPORT WALL, OR OTHER DESIGN ELEMENTS. CONSIDERING THE DIVERSE RANGE OF CONSTRUCTION CONDITIONS THAT MAY BE ENCOUNTERED, EAPI BEARS NO RESPONSIBILITY AND DOES NOT PROVIDE RECOMMENDATIONS CONCERNING SUPPORT WALL CONSTRUCTION OR THE ANCHORAGE OF THE SUBSTRUCTURE TO SUPPORT WALL ELEMENTS. EAPI STRONGLY ADVISES THAT THESE CONNECTIONS BE DEVISED BY A LICENSED PROFESSIONAL, ADHERING TO APPLICABLE BUILDING CODES, PRODUCT TEST REPORTS, AND OTHER RELEVANT INSTALLATION SUPPORT DOCUMENTS.

FOR PROJECTS NECESSITATING COMPLIANCE, PLEASE CONSULT OUR WEBSITE FOR SPECIFIC DESIGN DETAILS REGARDING THE ALFA FIXING SYSTEMS. IF YOUR PROJECT REQUIRES COMPLIANCE WITH US STANDARDS, KINDLY CONTACT OUR TECHNICAL SERVICES DEPARTMENT FOR FURTHER INFORMATION.

SHIMMING SHOULD CONFORM TO GENERALLY ACCEPTED CURTAIN WALL STANDARDS, WITH A RATIO OF 1/4" PER 20'.

* THE MANUFACTURER RECOMMENDS USING A THICKNESS OF 3/8" OR MORE FOR EXTERIOR WALLS AND CEILINGS DUE TO DURABILITY AND SAFETY CONCERNS.



8- WINDOW HEAD

DRAWN BY
HN

JOB #
000-000

DATE
03-14-2024

REV #	DATE	COMMENTS
▲		
▲		
▲		
▲		

This document is the sole property of ALFA Panels, and all design, manufacturing, reproduction, use and sale rights regarding the same are expressly forbidden. It is submitted under a confidential relationship, for a special purpose, and the recipient, by accepting this document assumes custody and agrees that this document will not be copied or reproduced in whole or in part, nor its contents revealed in any manner or to any person except for the purpose for which it was tendered, nor any special features peculiar to this design be incorporated in other projects.

SHEET NUMBER

A10

No.	EAPI PARTS DESCRIPTION
1	ALFA PANEL (5/16", 3/8", 1/2") *
2	GASKET PAD (1/16" THICK)
3	PANEL FASTENER

	NOT BY EAPI
A	APPROVED WRB
B	CHANNEL ANCHOR
C	SHEATHING
D	STEEL BACKING PLATE
E	Z- CHANNEL
F	CLOSURE TRIM

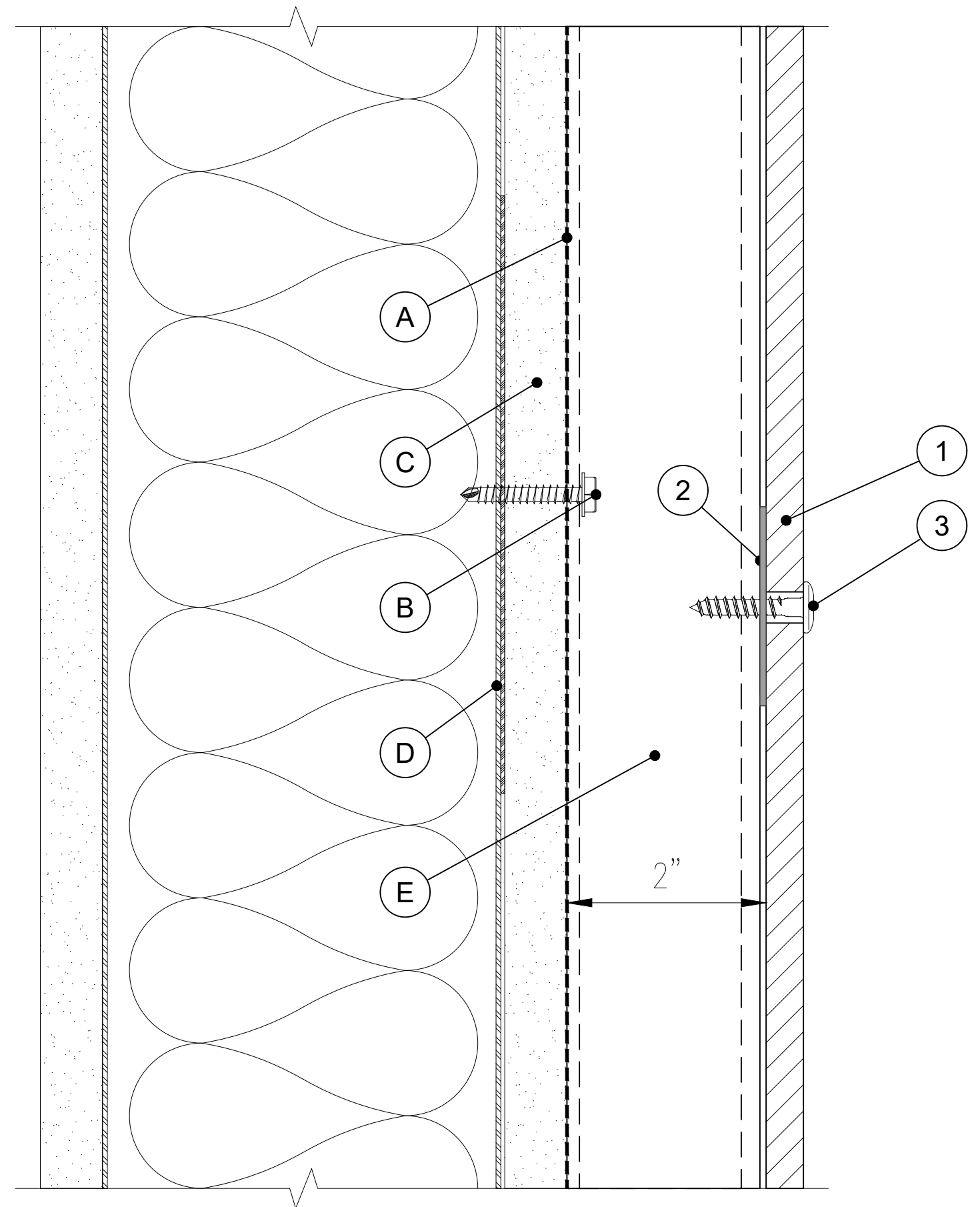
PLEASE CONSULT WITH YOUR LOCAL SALES REPRESENTATIVE FOR INFORMATION REGARDING THE SOURCE OF SUPPLY FOR SPECIFIC COMPONENTS NOT SUPPLIED BY EAPI AND FOLLOW THE MANUFACTURER'S GUIDELINES.

THESE SHOP DRAWINGS AND EAPI'S RECOMMENDATIONS DO NOT ENCOMPASS THE SUPPORT WALL CONSTRUCTION, STRUCTURAL DETAILS OF THE SUBSTRUCTURE'S ANCHORAGE TO THE SUPPORT WALL, OR OTHER DESIGN ELEMENTS. CONSIDERING THE DIVERSE RANGE OF CONSTRUCTION CONDITIONS THAT MAY BE ENCOUNTERED, EAPI BEARS NO RESPONSIBILITY AND DOES NOT PROVIDE RECOMMENDATIONS CONCERNING SUPPORT WALL CONSTRUCTION OR THE ANCHORAGE OF THE SUBSTRUCTURE TO SUPPORT WALL ELEMENTS. EAPI STRONGLY ADVISES THAT THESE CONNECTIONS BE DEvised BY A LICENSED PROFESSIONAL, ADHERING TO APPLICABLE BUILDING CODES, PRODUCT TEST REPORTS, AND OTHER RELEVANT INSTALLATION SUPPORT DOCUMENTS.

FOR PROJECTS NECESSITATING COMPLIANCE, PLEASE CONSULT OUR WEBSITE FOR SPECIFIC DESIGN DETAILS REGARDING THE ALFA FIXING SYSTEMS. IF YOUR PROJECT REQUIRES COMPLIANCE WITH US STANDARDS, KINDLY CONTACT OUR TECHNICAL SERVICES DEPARTMENT FOR FURTHER INFORMATION.

SHIMMING SHOULD CONFORM TO GENERALLY ACCEPTED CURTAIN WALL STANDARDS, WITH A RATIO OF 1/4" PER 20'.

* THE MANUFACTURER RECOMMENDS USING A THICKNESS OF 3/8" OR MORE FOR EXTERIOR WALLS AND CEILINGS DUE TO DURABILITY AND SAFETY CONCERNS.



9- HORIZONTAL MID PANEL

DRAWN BY
HN

JOB #
000-000

DATE
03-14-2024

REV #	DATE	COMMENTS
▲		
▲		
▲		
▲		

This document is the sole property of ALFA Panels, and all design, manufacturing, reproduction, use and sale rights regarding the same are expressly forbidden. It is submitted under a confidential relationship, for a special purpose, and the recipient, by accepting this document assumes custody and agrees that this document will not be copied or reproduced in whole or in part, nor its contents revealed in any manner or to any person except for the purpose for which it was tendered, nor any special features peculiar to this design be incorporated in other projects.

SHEET NUMBER

A11

No.	EAPI PARTS DESCRIPTION
1	ALFA PANEL (5/16", 3/8", 1/2") *
2	GASKET PAD (1/16" THICK)
3	PANEL FASTENER

	NOT BY EAPI
A	APPROVED WRB
B	CHANNEL ANCHOR
C	SHEATHING
D	STEEL BACKING PLATE
E	Z-CHANNEL
F	CLOSURE TRIM

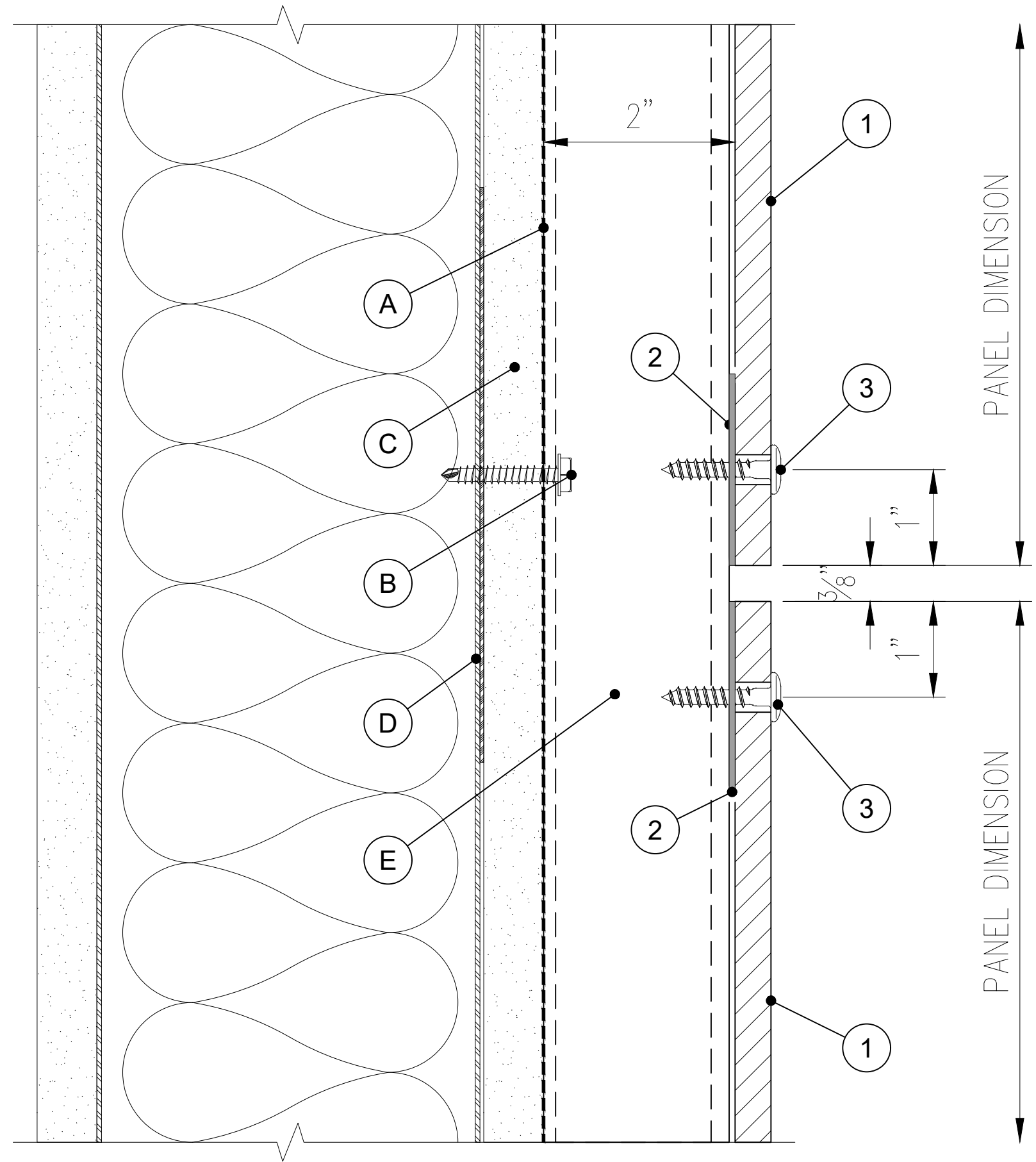
PLEASE CONSULT WITH YOUR LOCAL SALES REPRESENTATIVE FOR INFORMATION REGARDING THE SOURCE OF SUPPLY FOR SPECIFIC COMPONENTS NOT SUPPLIED BY EAPI AND FOLLOW THE MANUFACTURER'S GUIDELINES.

THESE SHOP DRAWINGS AND EAPI'S RECOMMENDATIONS DO NOT ENCOMPASS THE SUPPORT WALL CONSTRUCTION, STRUCTURAL DETAILS OF THE SUBSTRUCTURE'S ANCHORAGE TO THE SUPPORT WALL, OR OTHER DESIGN ELEMENTS. CONSIDERING THE DIVERSE RANGE OF CONSTRUCTION CONDITIONS THAT MAY BE ENCOUNTERED, EAPI BEARS NO RESPONSIBILITY AND DOES NOT PROVIDE RECOMMENDATIONS CONCERNING SUPPORT WALL CONSTRUCTION OR THE ANCHORAGE OF THE SUBSTRUCTURE TO SUPPORT WALL ELEMENTS. EAPI STRONGLY ADVISES THAT THESE CONNECTIONS BE DEVISED BY A LICENSED PROFESSIONAL, ADHERING TO APPLICABLE BUILDING CODES, PRODUCT TEST REPORTS, AND OTHER RELEVANT INSTALLATION SUPPORT DOCUMENTS.

FOR PROJECTS NECESSITATING COMPLIANCE, PLEASE CONSULT OUR WEBSITE FOR SPECIFIC DESIGN DETAILS REGARDING THE ALFA FIXING SYSTEMS. IF YOUR PROJECT REQUIRES COMPLIANCE WITH US STANDARDS, KINDLY CONTACT OUR TECHNICAL SERVICES DEPARTMENT FOR FURTHER INFORMATION.

SHIMMING SHOULD CONFORM TO GENERALLY ACCEPTED CURTAIN WALL STANDARDS, WITH A RATIO OF 1/4" PER 20'.

* THE MANUFACTURER RECOMMENDS USING A THICKNESS OF 3/8" OR MORE FOR EXTERIOR WALLS AND CEILINGS DUE TO DURABILITY AND SAFETY CONCERNS.



10- HORIZONTAL PANEL JOINT

DRAWN BY
HN

JOB #
000-000

DATE
03-14-2024

REV #	DATE	COMMENTS
▲		
▲		
▲		
▲		

This document is the sole property of ALFA Panels, and all design, manufacturing, reproduction, use and sale rights regarding the same are expressly forbidden. It is submitted under a confidential relationship, for a special purpose, and the recipient, by accepting this document assumes custody and agrees that this document will not be copied or reproduced in whole or in part, nor its contents revealed in any manner or to any person except for the purpose for which it was tendered, nor any special features peculiar to this design be incorporated in other projects.

SHEET NUMBER

A12

No.	EAPI PARTS DESCRIPTION
1	ALFA PANEL (5/16", 3/8", 1/2") *
2	GASKET PAD (1/16" THICK)
3	PANEL FASTENER

	NOT BY EAPI
A	APPROVED WRB
B	CHANNEL ANCHOR
C	SHEATHING
D	STEEL BACKING PLATE
E	Z-CHANNEL
F	CLOSURE TRIM

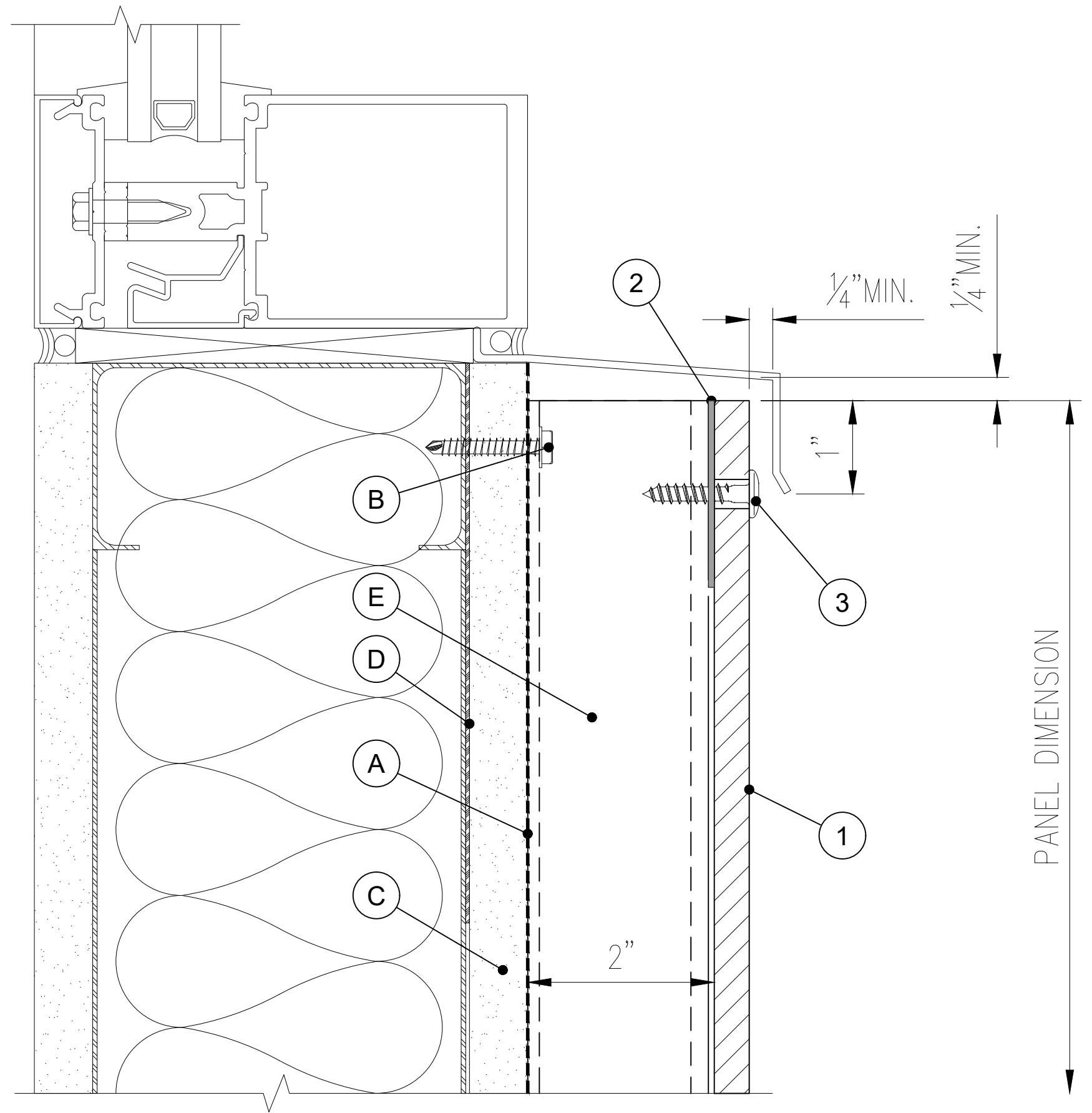
PLEASE CONSULT WITH YOUR LOCAL SALES REPRESENTATIVE FOR INFORMATION REGARDING THE SOURCE OF SUPPLY FOR SPECIFIC COMPONENTS NOT SUPPLIED BY EAPI AND FOLLOW THE MANUFACTURER'S GUIDELINES.

THESE SHOP DRAWINGS AND EAPI'S RECOMMENDATIONS DO NOT ENCOMPASS THE SUPPORT WALL CONSTRUCTION, STRUCTURAL DETAILS OF THE SUBSTRUCTURE'S ANCHORAGE TO THE SUPPORT WALL, OR OTHER DESIGN ELEMENTS. CONSIDERING THE DIVERSE RANGE OF CONSTRUCTION CONDITIONS THAT MAY BE ENCOUNTERED, EAPI BEARS NO RESPONSIBILITY AND DOES NOT PROVIDE RECOMMENDATIONS CONCERNING SUPPORT WALL CONSTRUCTION OR THE ANCHORAGE OF THE SUBSTRUCTURE TO SUPPORT WALL ELEMENTS. EAPI STRONGLY ADVISES THAT THESE CONNECTIONS BE DEvised BY A LICENSED PROFESSIONAL, ADHERING TO APPLICABLE BUILDING CODES, PRODUCT TEST REPORTS, AND OTHER RELEVANT INSTALLATION SUPPORT DOCUMENTS.

FOR PROJECTS NECESSITATING COMPLIANCE, PLEASE CONSULT OUR WEBSITE FOR SPECIFIC DESIGN DETAILS REGARDING THE ALFA FIXING SYSTEMS. IF YOUR PROJECT REQUIRES COMPLIANCE WITH US STANDARDS, KINDLY CONTACT OUR TECHNICAL SERVICES DEPARTMENT FOR FURTHER INFORMATION.

SHIMMING SHOULD CONFORM TO GENERALLY ACCEPTED CURTAIN WALL STANDARDS, WITH A RATIO OF 1/4" PER 20'.

* THE MANUFACTURER RECOMMENDS USING A THICKNESS OF 3/8" OR MORE FOR EXTERIOR WALLS AND CEILINGS DUE TO DURABILITY AND SAFETY CONCERNS.



11 - WINDOW SILL

DRAWN BY
HN

JOB #
000-000

DATE
03-14-2024

REV #	DATE	COMMENTS
▲		
▲		
▲		
▲		

This document is the sole property of ALFA Panels, and all design, manufacturing, reproduction, use and sale rights regarding the same are expressly forbidden. It is submitted under a confidential relationship, for a special purpose, and the recipient, by accepting this document assumes custody and agrees that this document will not be copied or reproduced in whole or in part, nor its contents revealed in any manner or to any person except for the purpose for which it was tendered, nor any special features peculiar to this design be incorporated in other projects.

SHEET NUMBER

A13

No.	EAPI PARTS DESCRIPTION
1	ALFA PANEL (5/16", 3/8", 1/2") *
2	GASKET PAD (1/16" THICK)
3	PANEL FASTENER

NOT BY EAPI	
A	APPROVED WRB
B	CHANNEL ANCHOR
C	SHEATHING
D	STEEL BACKING PLATE
E	Z-CHANNEL
F	CLOSURE TRIM

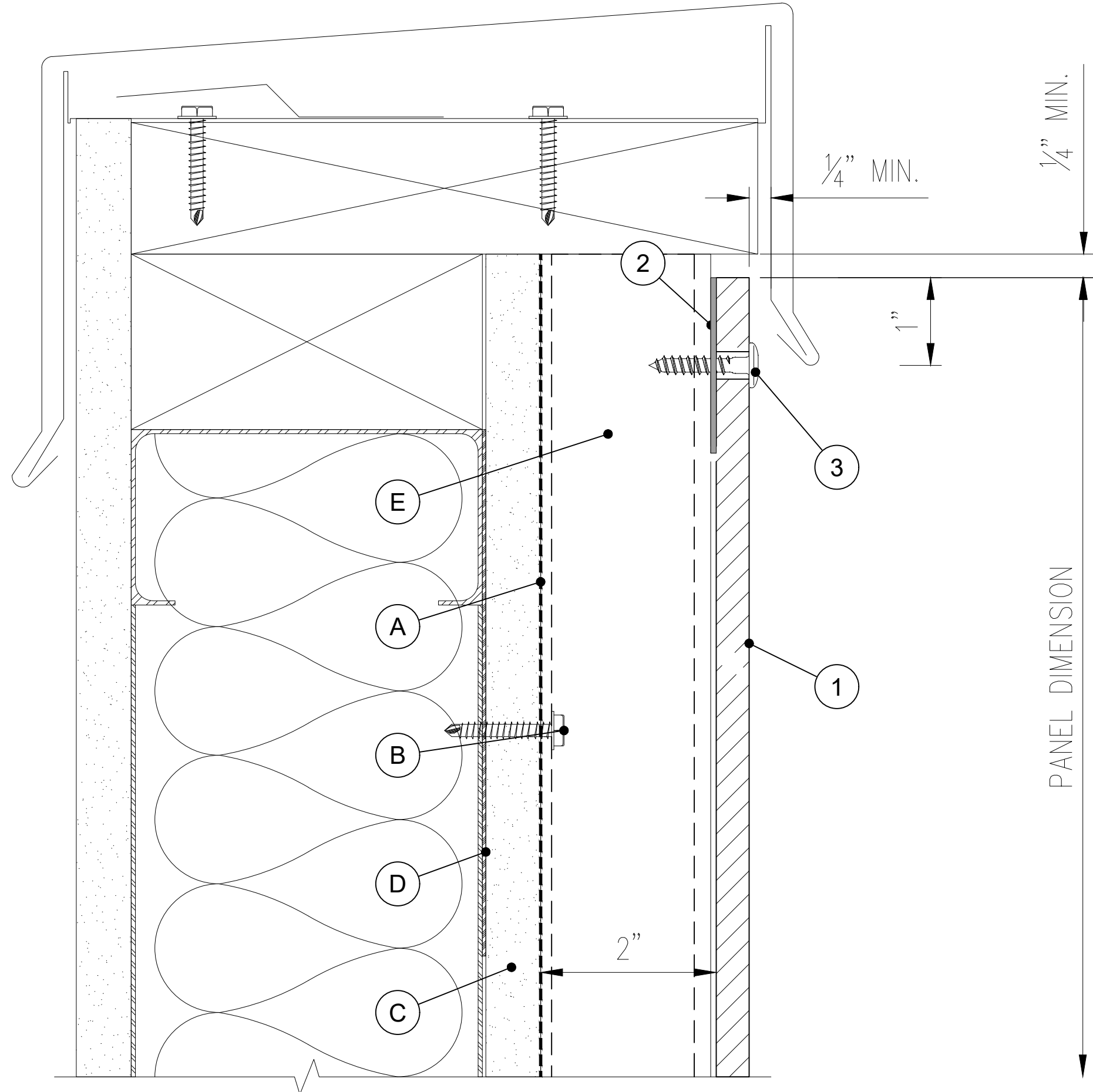
PLEASE CONSULT WITH YOUR LOCAL SALES REPRESENTATIVE FOR INFORMATION REGARDING THE SOURCE OF SUPPLY FOR SPECIFIC COMPONENTS NOT SUPPLIED BY EAPI AND FOLLOW THE MANUFACTURER'S GUIDELINES.

THESE SHOP DRAWINGS AND EAPI'S RECOMMENDATIONS DO NOT ENCOMPASS THE SUPPORT WALL CONSTRUCTION, STRUCTURAL DETAILS OF THE SUBSTRUCTURE'S ANCHORAGE TO THE SUPPORT WALL, OR OTHER DESIGN ELEMENTS. CONSIDERING THE DIVERSE RANGE OF CONSTRUCTION CONDITIONS THAT MAY BE ENCOUNTERED, EAPI BEARS NO RESPONSIBILITY AND DOES NOT PROVIDE RECOMMENDATIONS CONCERNING SUPPORT WALL CONSTRUCTION OR THE ANCHORAGE OF THE SUBSTRUCTURE TO SUPPORT WALL ELEMENTS. EAPI STRONGLY ADVISES THAT THESE CONNECTIONS BE DEvised BY A LICENSED PROFESSIONAL, ADHERING TO APPLICABLE BUILDING CODES, PRODUCT TEST REPORTS, AND OTHER RELEVANT INSTALLATION SUPPORT DOCUMENTS.

FOR PROJECTS NECESSITATING COMPLIANCE, PLEASE CONSULT OUR WEBSITE FOR SPECIFIC DESIGN DETAILS REGARDING THE ALFA FIXING SYSTEMS. IF YOUR PROJECT REQUIRES COMPLIANCE WITH US STANDARDS, KINDLY CONTACT OUR TECHNICAL SERVICES DEPARTMENT FOR FURTHER INFORMATION.

SHIMMING SHOULD CONFORM TO GENERALLY ACCEPTED CURTAIN WALL STANDARDS, WITH A RATIO OF 1/4" PER 20'.

* THE MANUFACTURER RECOMMENDS USING A THICKNESS OF 3/8" OR MORE FOR EXTERIOR WALLS AND CEILINGS DUE TO DURABILITY AND SAFETY CONCERNS.



12- PARAPET CAP

DRAWN BY
HN

JOB #
000-000

DATE
03-14-2024

REV #	DATE	COMMENTS
▲		
▲		
▲		
▲		

This document is the sole property of ALFA Panels, and all design, manufacturing, reproduction, use and sale rights regarding the same are expressly forbidden. It is submitted under a confidential relationship, for a special purpose, and the recipient, by accepting this document assumes custody and agrees that this document will not be copied or reproduced in whole or in part, nor its contents revealed in any manner or to any person except for the purpose for which it was tendered, nor any special features peculiar to this design be incorporated in other projects.

SHEET NUMBER

A14

No.	EAPI PARTS DESCRIPTION
1	ALFA PANEL (5/16", 3/8", 1/2") *
2	GASKET PAD (1/16" THICK)
3	PANEL FASTENER

	NOT BY EAPI
A	APPROVED WRB
B	CHANNEL ANCHOR
C	SHEATHING
D	STEEL BACKING PLATE
E	Z-CHANNEL
F	CLOSURE TRIM

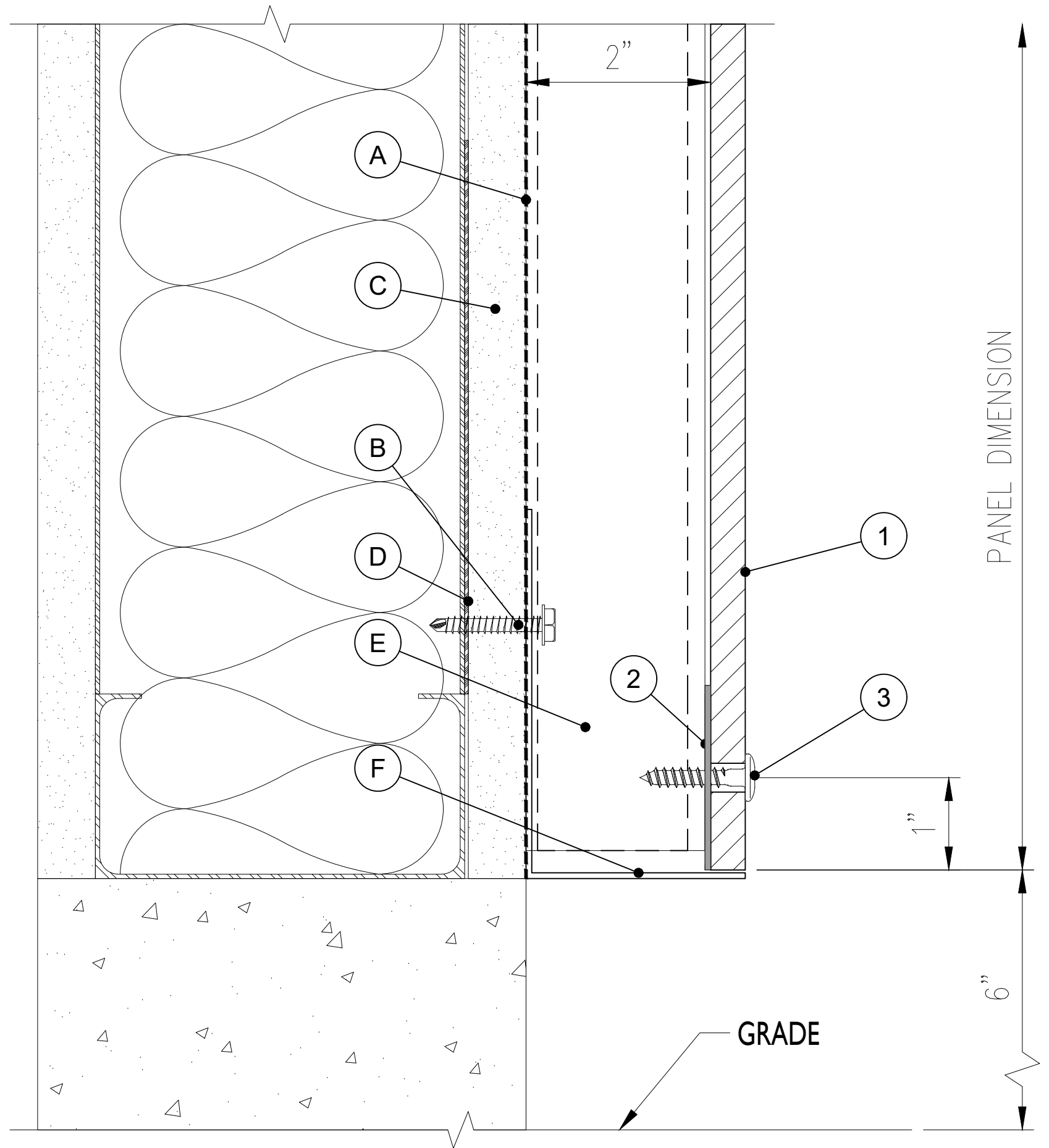
PLEASE CONSULT WITH YOUR LOCAL SALES REPRESENTATIVE FOR INFORMATION REGARDING THE SOURCE OF SUPPLY FOR SPECIFIC COMPONENTS NOT SUPPLIED BY EAPI AND FOLLOW THE MANUFACTURER'S GUIDELINES.

THESE SHOP DRAWINGS AND EAPI'S RECOMMENDATIONS DO NOT ENCOMPASS THE SUPPORT WALL CONSTRUCTION, STRUCTURAL DETAILS OF THE SUBSTRUCTURE'S ANCHORAGE TO THE SUPPORT WALL, OR OTHER DESIGN ELEMENTS. CONSIDERING THE DIVERSE RANGE OF CONSTRUCTION CONDITIONS THAT MAY BE ENCOUNTERED, EAPI BEARS NO RESPONSIBILITY AND DOES NOT PROVIDE RECOMMENDATIONS CONCERNING SUPPORT WALL CONSTRUCTION OR THE ANCHORAGE OF THE SUBSTRUCTURE TO SUPPORT WALL ELEMENTS. EAPI STRONGLY ADVISES THAT THESE CONNECTIONS BE DEvised BY A LICENSED PROFESSIONAL, ADHERING TO APPLICABLE BUILDING CODES, PRODUCT TEST REPORTS, AND OTHER RELEVANT INSTALLATION SUPPORT DOCUMENTS.

FOR PROJECTS NECESSITATING COMPLIANCE, PLEASE CONSULT OUR WEBSITE FOR SPECIFIC DESIGN DETAILS REGARDING THE ALFA FIXING SYSTEMS. IF YOUR PROJECT REQUIRES COMPLIANCE WITH US STANDARDS, KINDLY CONTACT OUR TECHNICAL SERVICES DEPARTMENT FOR FURTHER INFORMATION.

SHIMMING SHOULD CONFORM TO GENERALLY ACCEPTED CURTAIN WALL STANDARDS, WITH A RATIO OF 1/4" PER 20'.

* THE MANUFACTURER RECOMMENDS USING A THICKNESS OF 3/8" OR MORE FOR EXTERIOR WALLS AND CEILINGS DUE TO DURABILITY AND SAFETY CONCERNS.



13- FLOOR BASE PANEL

DRAWN BY
HN

JOB #
000-000

DATE
03-14-2024

REV #	DATE	COMMENTS
▲		
▲		
▲		
▲		
▲		

This document is the sole property of ALFA Panels, and all design, manufacturing, reproduction, use and sale rights regarding the same are expressly forbidden. It is submitted under a confidential relationship, for a special purpose, and the recipient, by accepting this document assumes custody and agrees that this document will not be copied or reproduced in whole or in part, nor its contents revealed in any manner or to any person except for the purpose for which it was tendered, nor any special features peculiar to this design be incorporated in other projects.

SHEET NUMBER

A15

No.	EAPI PARTS DESCRIPTION
1	ALFA PANEL (5/16", 3/8", 1/2") *
2	GASKET PAD (1/16" THICK)
3	PANEL FASTENER

NOT BY EAPI	
A	APPROVED WRB
B	CHANNEL ANCHOR
C	SHEATHING
D	STEEL BACKING PLATE
E	Z-CHANNEL
F	CLOSURE TRIM

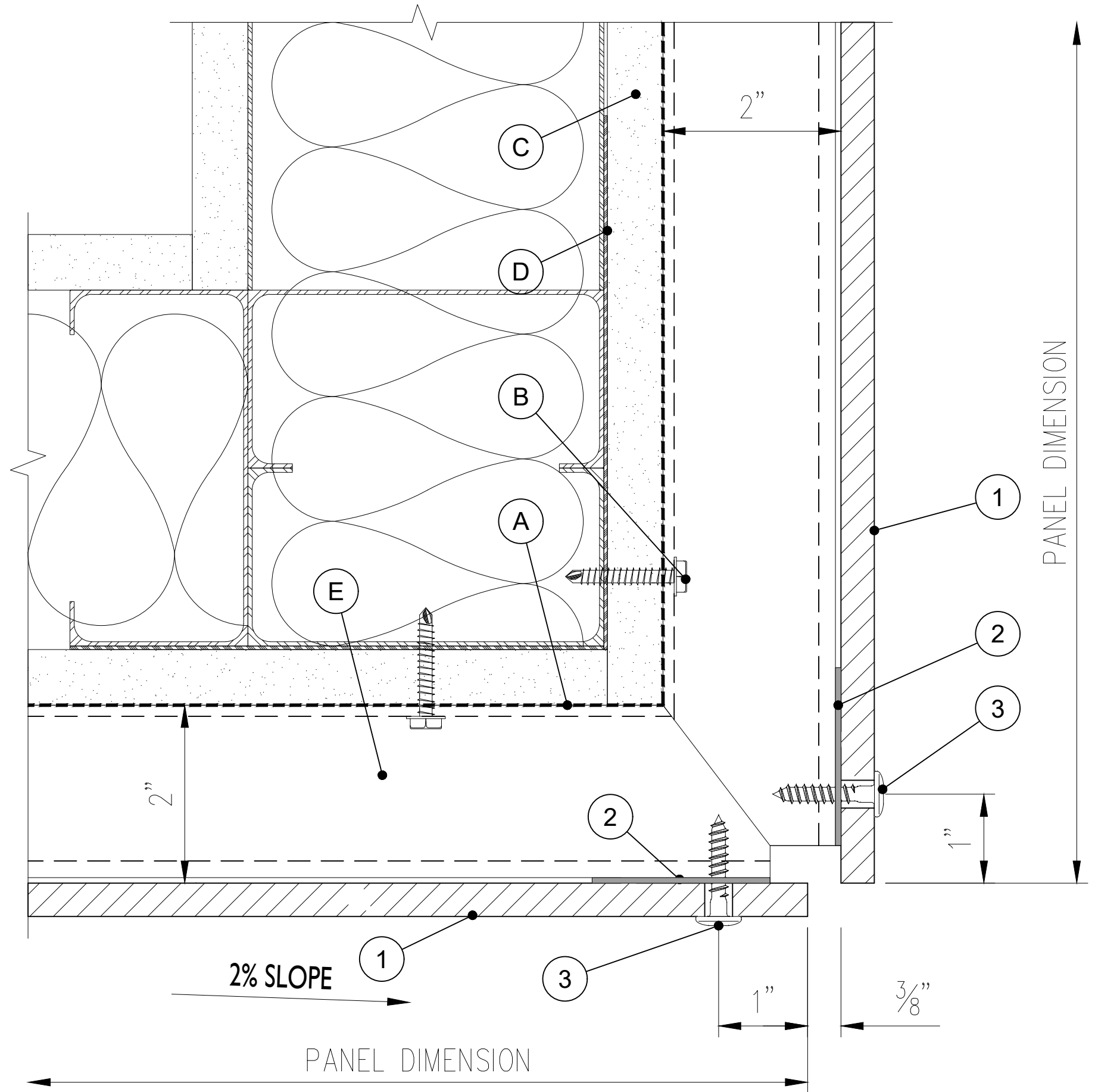
PLEASE CONSULT WITH YOUR LOCAL SALES REPRESENTATIVE FOR INFORMATION REGARDING THE SOURCE OF SUPPLY FOR SPECIFIC COMPONENTS NOT SUPPLIED BY EAPI AND FOLLOW THE MANUFACTURER'S GUIDELINES.

THESE SHOP DRAWINGS AND EAPI'S RECOMMENDATIONS DO NOT ENCOMPASS THE SUPPORT WALL CONSTRUCTION, STRUCTURAL DETAILS OF THE SUBSTRUCTURE'S ANCHORAGE TO THE SUPPORT WALL, OR OTHER DESIGN ELEMENTS. CONSIDERING THE DIVERSE RANGE OF CONSTRUCTION CONDITIONS THAT MAY BE ENCOUNTERED, EAPI BEARS NO RESPONSIBILITY AND DOES NOT PROVIDE RECOMMENDATIONS CONCERNING SUPPORT WALL CONSTRUCTION OR THE ANCHORAGE OF THE SUBSTRUCTURE TO SUPPORT WALL ELEMENTS. EAPI STRONGLY ADVISES THAT THESE CONNECTIONS BE DEvised BY A LICENSED PROFESSIONAL, ADHERING TO APPLICABLE BUILDING CODES, PRODUCT TEST REPORTS, AND OTHER RELEVANT INSTALLATION SUPPORT DOCUMENTS.

FOR PROJECTS NECESSITATING COMPLIANCE, PLEASE CONSULT OUR WEBSITE FOR SPECIFIC DESIGN DETAILS REGARDING THE ALFA FIXING SYSTEMS. IF YOUR PROJECT REQUIRES COMPLIANCE WITH US STANDARDS, KINDLY CONTACT OUR TECHNICAL SERVICES DEPARTMENT FOR FURTHER INFORMATION.

SHIMMING SHOULD CONFORM TO GENERALLY ACCEPTED CURTAIN WALL STANDARDS, WITH A RATIO OF 1/4" PER 20'.

* THE MANUFACTURER RECOMMENDS USING A THICKNESS OF 3/8" OR MORE FOR EXTERIOR WALLS AND CEILINGS DUE TO DURABILITY AND SAFETY CONCERNS.



14a- SOFFIT DETAIL

DRAWN BY
HN

JOB #
000-000

DATE
03-14-2024

REV #	DATE	COMMENTS
▲		
▲		
▲		
▲		

This document is the sole property of ALFA Panels, and all design, manufacturing, reproduction, use and sale rights regarding the same are expressly forbidden. It is submitted under a confidential relationship, for a special purpose, and the recipient, by accepting this document assumes custody and agrees that this document will not be copied or reproduced in whole or in part, nor its contents revealed in any manner or to any person except for the purpose for which it was tendered, nor any special features peculiar to this design be incorporated in other projects.

SHEET NUMBER

A16

No.	EAPI PARTS DESCRIPTION
1	ALFA PANEL (5/16", 3/8", 1/2") *
2	GASKET PAD (1/16" THICK)
3	PANEL FASTENER

	NOT BY EAPI
A	APPROVED WRB
B	CHANNEL ANCHOR
C	SHEATHING
D	STEEL BACKING PLATE
E	Z-CHANNEL
F	CLOSURE TRIM

PLEASE CONSULT WITH YOUR LOCAL SALES REPRESENTATIVE FOR INFORMATION REGARDING THE SOURCE OF SUPPLY FOR SPECIFIC COMPONENTS NOT SUPPLIED BY EAPI AND FOLLOW THE MANUFACTURER'S GUIDELINES.

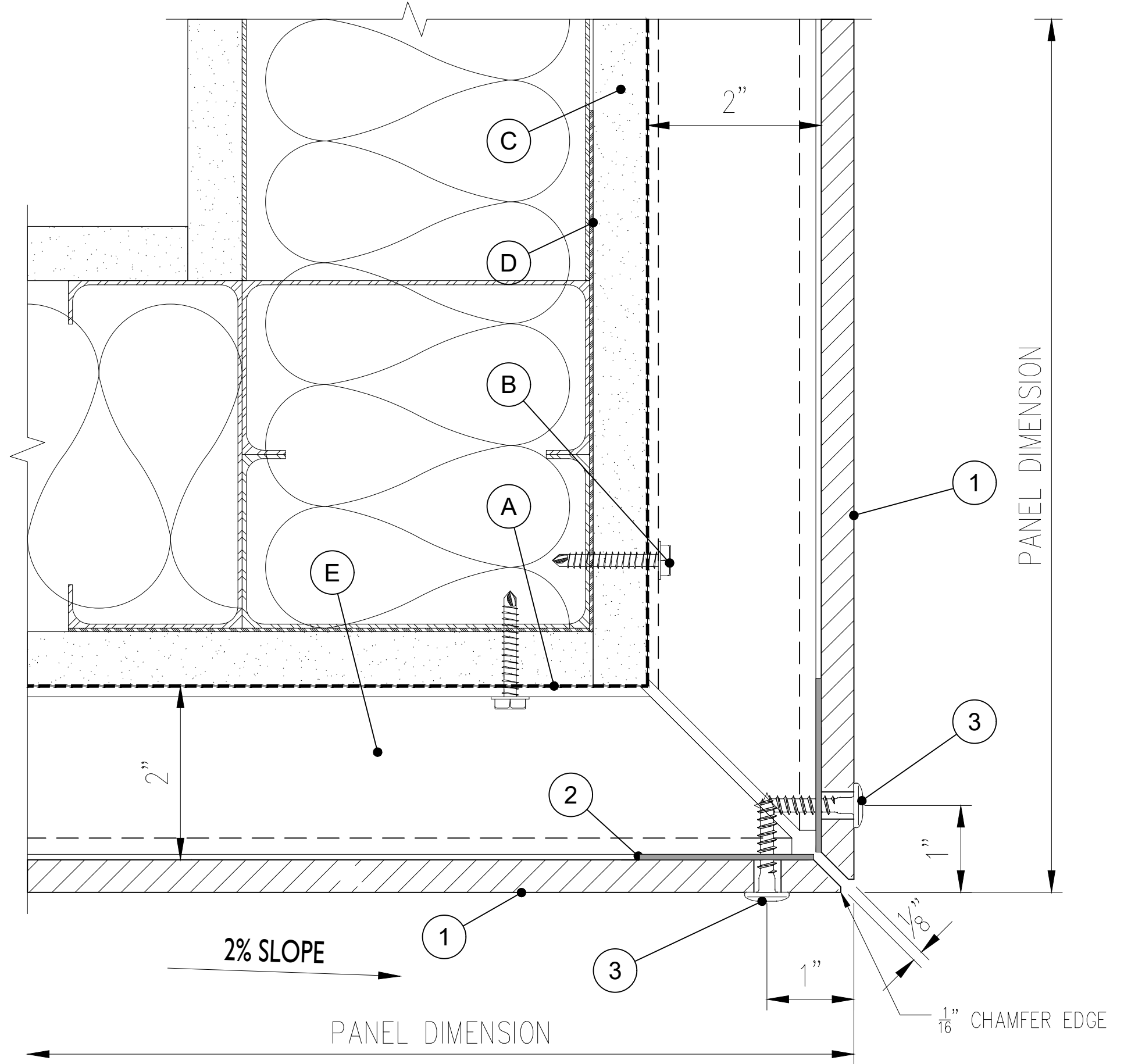
THESE SHOP DRAWINGS AND EAPI'S RECOMMENDATIONS DO NOT ENCOMPASS THE SUPPORT WALL CONSTRUCTION, STRUCTURAL DETAILS OF THE SUBSTRUCTURE'S ANCHORAGE TO THE SUPPORT WALL, OR OTHER DESIGN ELEMENTS. CONSIDERING THE DIVERSE RANGE OF CONSTRUCTION CONDITIONS THAT MAY BE ENCOUNTERED, EAPI BEARS NO RESPONSIBILITY AND DOES NOT PROVIDE RECOMMENDATIONS CONCERNING SUPPORT WALL CONSTRUCTION OR THE ANCHORAGE OF THE SUBSTRUCTURE TO SUPPORT WALL ELEMENTS. EAPI STRONGLY ADVISES THAT THESE CONNECTIONS BE DEvised BY A LICENSED PROFESSIONAL, ADHERING TO APPLICABLE BUILDING CODES, PRODUCT TEST REPORTS, AND OTHER RELEVANT INSTALLATION SUPPORT DOCUMENTS.

FOR PROJECTS NECESSITATING COMPLIANCE, PLEASE CONSULT OUR WEBSITE FOR SPECIFIC DESIGN DETAILS REGARDING THE ALFA FIXING SYSTEMS. IF YOUR PROJECT REQUIRES COMPLIANCE WITH US STANDARDS, KINDLY CONTACT OUR TECHNICAL SERVICES DEPARTMENT FOR FURTHER INFORMATION.

SHIMMING SHOULD CONFORM TO GENERALLY ACCEPTED CURTAIN WALL STANDARDS, WITH A RATIO OF 1/4" PER 20'.

* THE MANUFACTURER RECOMMENDS USING A THICKNESS OF 3/8" OR MORE FOR EXTERIOR WALLS AND CEILINGS DUE TO DURABILITY AND SAFETY CONCERNS.

THE MANUFACTURER DOES NOT RECOMMEND THIS DETAIL FOR EXTERNAL USES DUE TO PANEL EXPANSION



14b- SOFFIT MITERED DETAIL	

DRAWN BY HN
JOB # 000-000
DATE 03-14-2024

REV #	DATE	COMMENT
▲		
▲		
▲		
▲		

This document is the sole property of ALFA Panels, and all design, manufacturing, reproduction, use and sale rights regarding the same are expressly forbidden. It is submitted under a confidential relationship, for a special purpose, and the recipient, by accepting this document assumes custody and agrees that this document will not be copied or reproduced in whole or in part, nor its contents revealed in any manner or to any person except for the purpose for which it was tendered, nor any special features peculiar to this design be incorporated in other projects.

SHEET NUMBER
A17