



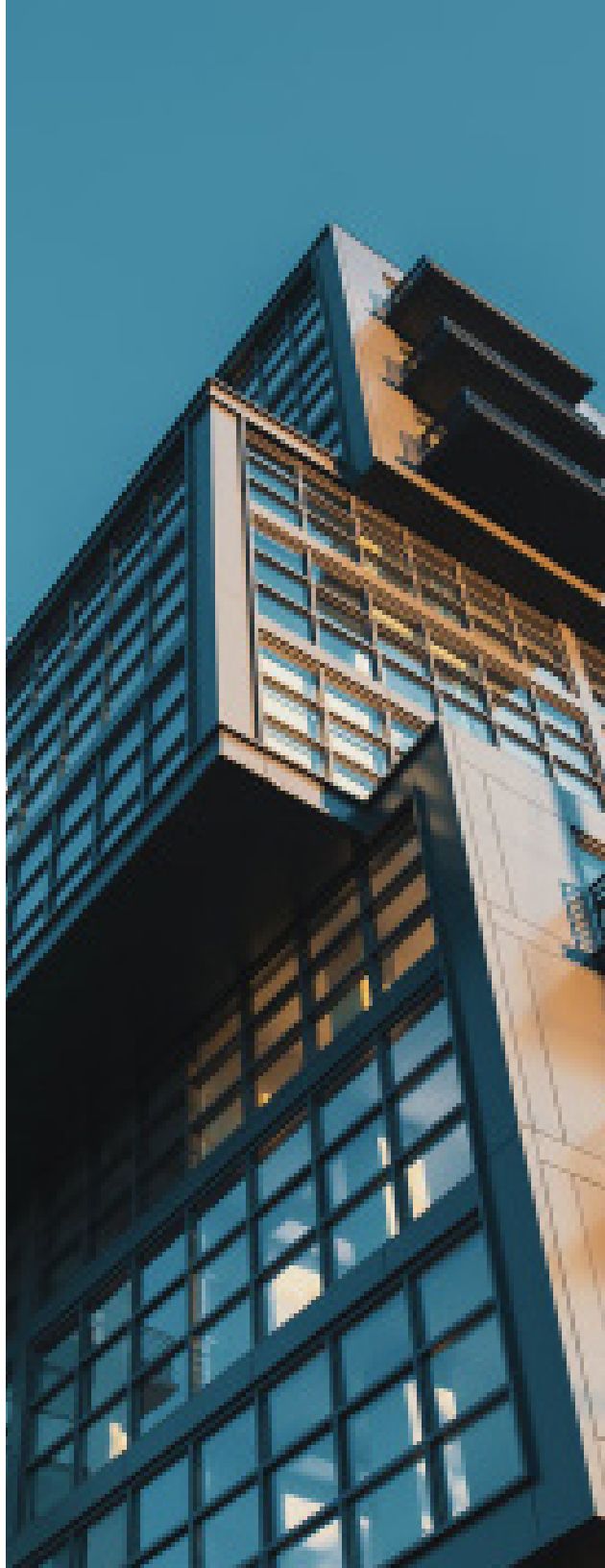
ELEVATE

Architectural Products



■ THOUGHTFULLY SOURCED. PERFORMANCE READY.

elevate-ap.com



■ WHO WE ARE

Elevate Architectural Products (EAP) delivers thoughtfully sourced, performance-ready materials curated for architecture, design, and construction. We partner with trusted global manufacturers to bring reliable, specification-ready products to market—tested to meet U.S. standards and designed to perform in real-world conditions.

We don't chase trends—we build trust. Our focus is on smart alternatives that offer value without compromise, supported by a team committed to clarity, quality, and client success.

■ OUR MISSION

To connect the design and construction industry with globally sourced, performance-tested materials—delivered with integrity, backed by expertise, and curated for real project demands.

■ OUR VISION

To elevate how the built environment is specified, sourced, and constructed—by making exceptional materials more accessible to those shaping our world.

■ ALFA® BY ELEVATE

Sustainable. Smart. Strong.

ALFA is a fire-resistant phenolic façade panel engineered to meet the demands of today's performance-driven architecture.

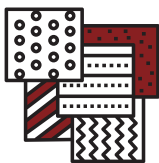
Manufactured through high-pressure lamination (HPL) using heat-cured resins, ALFA panels deliver outstanding durability, UV stability, and weather resistance—ideal for a wide range of exterior applications.

With a growing presence in commercial and institutional projects, phenolic panels like ALFA are favored for their long-term performance, low maintenance, and sustainable profile. Available in a curated range of finishes, textures, and colors, ALFA offers the design flexibility to bring both contemporary and enduring architectural visions to life.

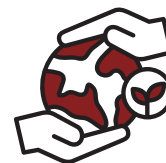
Whether the goal is code compliance, energy efficiency, or elevated aesthetics, ALFA provides façade solutions built to last—supporting the future of resilient, responsible design.



NFPA-285 Compliant
(Fiberglass Core –
ALFA-FR only)



Finishes in a curated
range of textures
and colors



Made VOC-free and
with recyclable
materials



UV, fade, and impact
resistant for low
maintenance



Supports both exposed
fastener and concealed
clip systems for easy install



Built for lasting
performance in
any environment

ALFA Panel Uses:

- Façades and ventilated rainscreen systems
- Accent walls and architectural features
- Soffits, overhangs, and ceilings
- Public infrastructure (e.g., transit hubs, schools, healthcare facilities, etc.)
- Commercial, institutional, and multi-family residential buildings

ALFA-FR is ideal for:

- High-rise and mid-rise structures
- Mixed-use and multi-occupancy developments
- Government, civic, and institutional facilities requiring enhanced fire performance

**Featured
Color:**
Cherry Oak
8828

TOEGYEWON GENERAL ADMINISTRATION TOWN
Scope: Architectural Accent Panels

Two Core Options:

ALFA Standard Core

Kraft paper core with thermosetting resin, offering fire and weather resistance with long-term durability. A cost-effective choice for exterior applications without compromising strength or style.

ALFA-FR (Fired-Rated)

Built with a high-performance fiberglass-reinforced core, ALFA-FR meets the rigorous **NFPA-285** fire safety standards. Delivers enhanced fire protection while maintaining the same sleek look and flexibility as the standard core.

■ OPTIONS FOR ALFA®

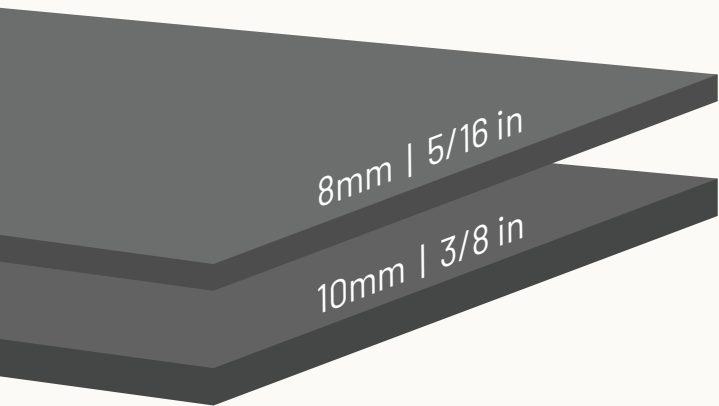
Dimensions

Panel Thickness:

8mm-10mm
5/16" - 3/8" (nominal)

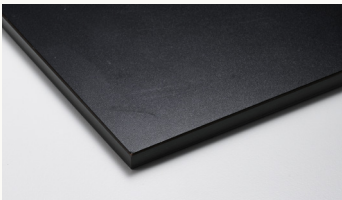
Standard Size:

1220mm x 2440mm
48" x 96"

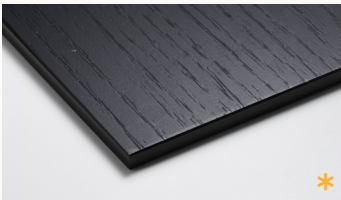


Finish Options (*Specialty Finishes)

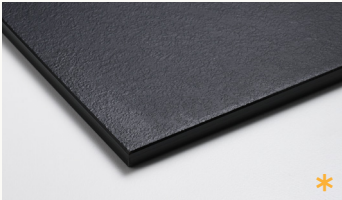
Embossed



Woodgrain Texture



Stone Texture



Soft Matte



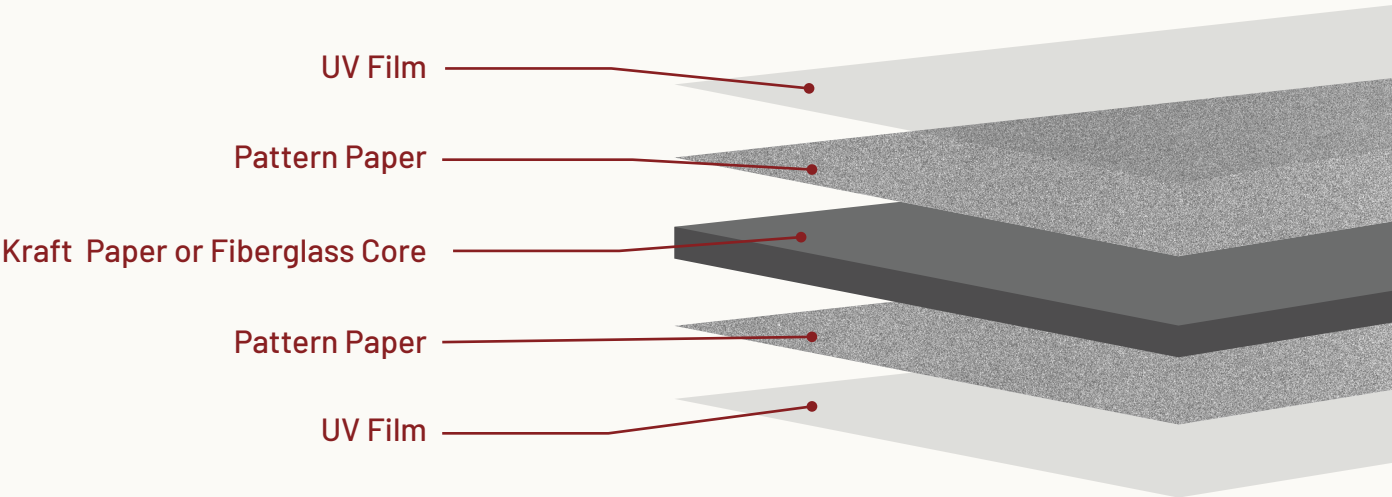
Core

ALFA Standard Core

Kraft paper-based core,
fire-resistant, Class B

ALFA-FR

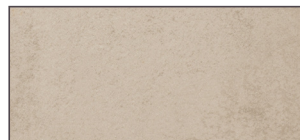
Fiberglass-reinforced core,
NFPA-285 tested and approved



AVAILABLE COLORS (*Available Soon)



Mineral



Limestone
7080P



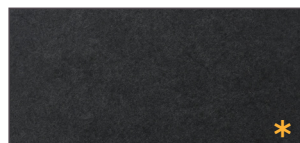
Granite
7081P



Flint
7082P

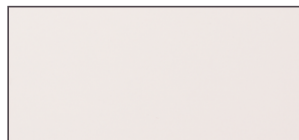


Obsidian
8908

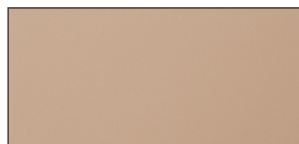


Onyx
8921

Monochrome



White
0020A



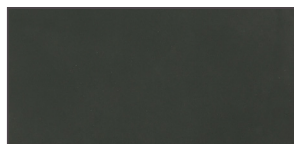
Beige
9931



Slate Grey
8911



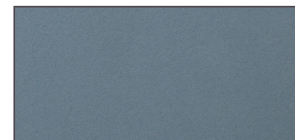
Sky Blue
9903



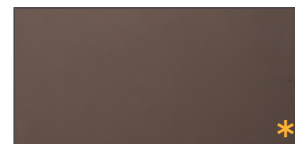
Dark Green
9933



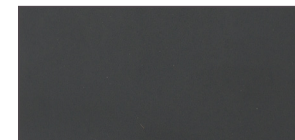
Charcoal (Black)
8610



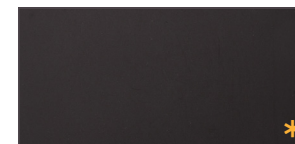
Pastel Blue
9904



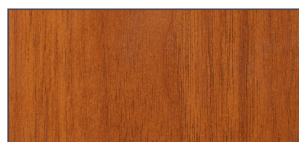
Greige
8939



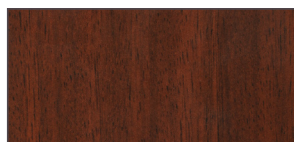
Navy
9932



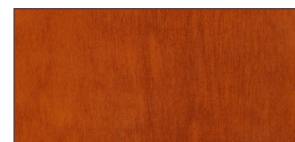
Mocha Shadow
8940



Oak
8825



Red Oak
8826



Cherry Oak
8828



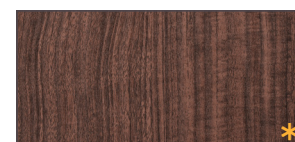
Natural Beech
8947



Yellow Oak
8829



Brown Oak
8827



Walnut
8923

Custom colors
available upon
request (longer
lead times apply)

Test	Standard	Property or Attribute	Measure Unit	Results
1. Physical Properties				
Bond Strength	ASTM C297	Strength of Failure ≥ 10	psi	Control: > 199 Freeze Thaw: > 265 UV Exposure: > 309
Flexural Strength	ASTM D1037	Average Strength $\geq 60\%$ of Control Control FIT: 500 Control FIC: 499	psi	Wet FIT: 593 (18.6%) Wet FIC: 602 (20.6%) Freeze Thaw FIT: 511 (2.2%) Freeze Thaw FIC: 498 (0.2%)
Freeze-Thaw Cycling	ICC-ES AC92 Section 3.2.2 & 4.2.1	Appearance/Performance		No change
Water Resistance	ASTM D2247	Appearance/Performance		No changes
Resistance to Fixings	ASTM 1037	Pull-Through Resistance Safety Factor of "3" if all requirements are met	lbs	1,320 3:440
2. Weather Resistance Requirements				
Accelerated Weathering	ICC-ES AC92 Section 3.2.1 & 4.2.1	Appearance/Performance		No change
Salt Spray Exposure	ASTM B117 (300h)	Appearance/Performance		No change
3. Safety Requirements				
Material Surface Burning Characteristics	ASTM E84	Classifications Frame Spread Index Smoke Developed Index	Class FSI SDI	B 26-75 0-450
Salt Spray Exposure	ASTM D1929	Appearance/Performance	C°	490

■ ACCESSORIES

Color-matches screws available for exposed installation. Sold separately.



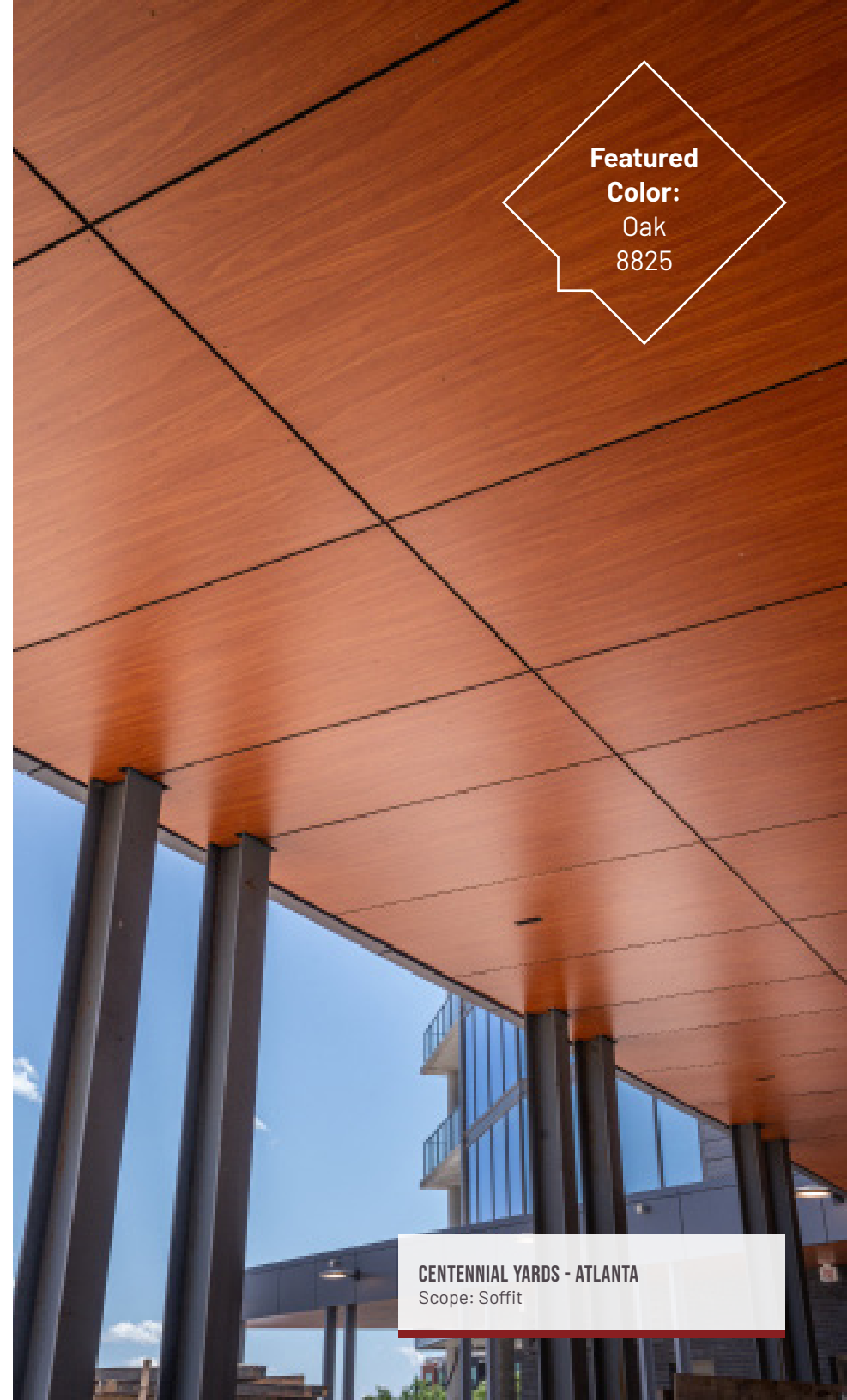
■ RESOURCES

For more information about our panels, please scan the QR code to the right.

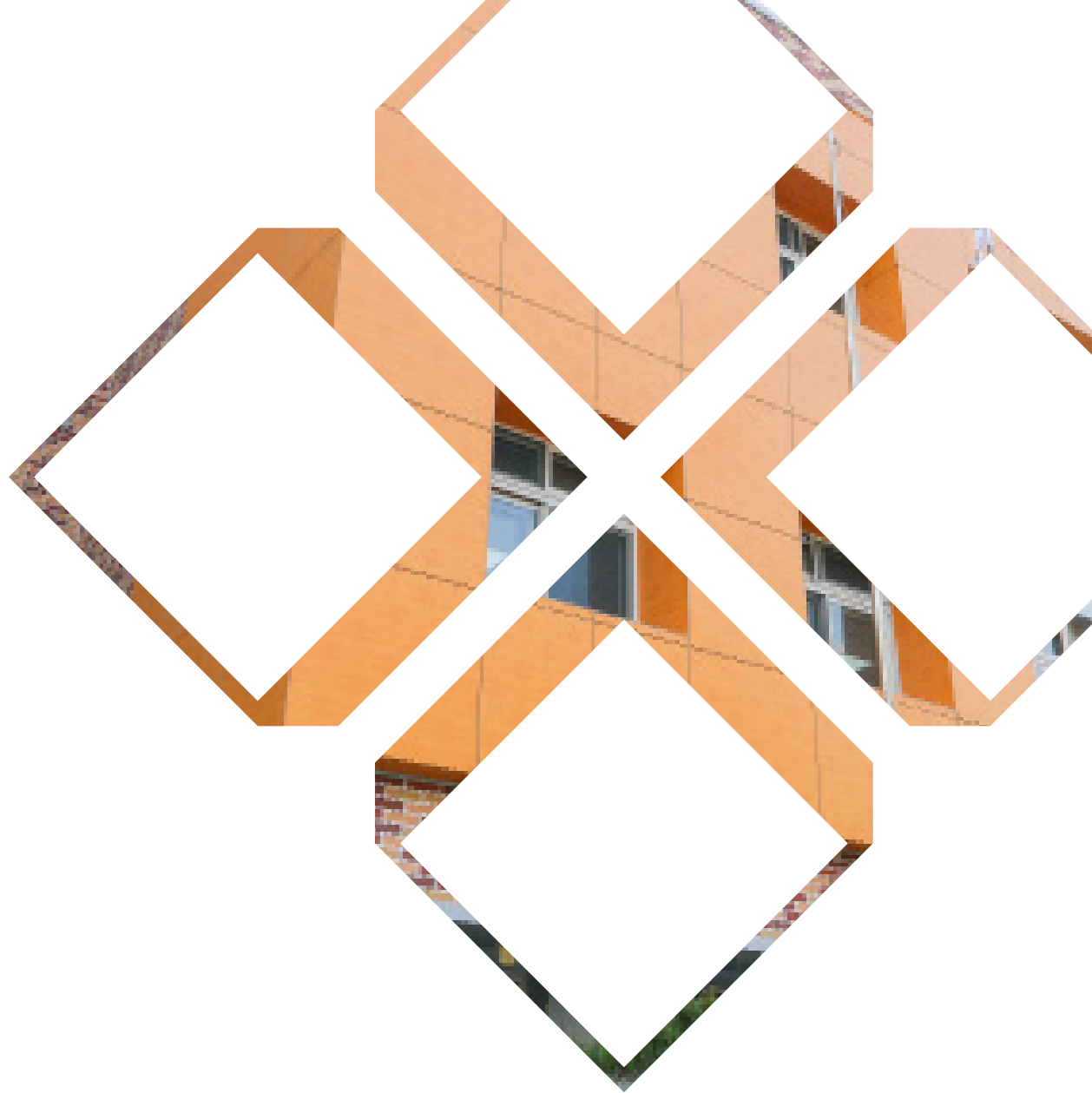


Disclaimer: The technical data sheet for ALFA® exterior panels is provided for informational purposes only. The information contained in this document is based on our current knowledge and is subject to change without notice. The data provided is believed to be accurate and reliable, but no warranty, express or implied, is made regarding its accuracy, completeness, or suitability for any particular purpose. The user assumes all risks and liabilities in connection with the use of this information. It is the responsibility of the user to determine the suitability of the product for their specific application and to comply with all applicable laws and regulations. The manufacturer shall not be liable for any damage, loss, or injury arising from the use or inability to use this product. This document does not constitute a warranty or guarantee, whether expressed or implied, including without limitation, any warranty of merchantability, fitness for a particular purpose or non-infringement of third party rights.

**Featured
Color:**
Oak
8825



CENTENNIAL YARDS - ATLANTA
Scope: Soffit



ELEVATE
Architectural Products

2675 Breckinridge Blvd
Duluth, GA 30096
470.929.6500
info@elevate-ap.com